

LEGEND/ABBREVIATIONS

PROJECT

INDEX

MECHANICAL LEGEND			ELECTRICAL LEGEND		
SYMBOL	ABBREV.	DEFINITION	SYMBOL	ABBREV.	DEFINITION
	SA	SUPPLY AIR DUCT UP, DOWN		DIA.	DIAMETER
	RA	RETURN AIR DUCT UP, DOWN		FOT	FLAT ON TOP
	EA	EXHAUST AIR DUCT UP, DOWN		FOB	FLAT ON BOTTOM
	OA	OUTSIDE AIR DUCT UP, DOWN		AFFP	AIRFOIL PLENUM FAN
		RECT. TO ROUND TRANSITION		DL	DOOR LOUVER
		FLEXIBLE CONNECTION (DUCTWORK)		AP	ACCESS PANEL
		FLEXIBLE DUCT		HPS	HIGH PRESSURE STEAM
	VD	MANUAL VOLUME DAMPER		LPS	LOW PRESSURE STEAM
	FD	FIRE DAMPER		SC	STEAM CONDENSATE
	MOD	MOTOR OPERATED DAMPER		HS(P)	HEATING SUPPLY (PRIMARY)
	SMD	SMOKE DAMPER		HS(S)	HEATING SUPPLY (SECONDARY)
	CD	COMBINATION FIRE/SMOKE DAMPER		HR(S)	HEATING RETURN (SECONDARY)
	AMS	AIR MONITORING STATION		HS	HEATING SUPPLY
	SA	SOUND ATTENUATOR		HR	HEATING RETURN
	DD	DUCT SMOKE DETECTOR		CS	CONDENSER WATER SUPPLY
		ELBOW W/ TURNING VANES		CW	CONDENSATE DRAIN LINE
		RADIUS ELBOW		HPWS	HEAT PUMP WATER SUPPLY
	FPTU	FAN POWERED W/ BOX W/ HEAT COIL		HPWR	HEAT PUMP WATER RETURN
	SL	ACOUSTICAL SOUND LINING		CW	COLD WATER
		CHANGE IN DUCTWORK		CD/COND	CONDENSATE DRAIN LINE
		POWER ROOF VENTILATOR		F&T	FLOAT AND THERMOSTATIC TRAP
		GATE VALVE		BTU	BRITISH THERMAL UNIT
		GLOBE VALVE		MTH	BTU PER HOUR (THOUSAND)
		BALL VALVE		SENS.	SENSIBLE
		MULTI-PURPOSE VALVE		WG	WATER GAUGE
		CHECK VALVE		VEL	VELOCITY
		BUTTERFLY VALVE		PPM	FEET PER MINUTE
		3-WAY MODULATING VALVE (ATC)		LF	LINEAR FOOT
		2-WAY MODULATING VALVE (ATC)		KW	KILOWATT
	PRV	PRESSURE REDUCING VALVE		MIN	MINIMUM
		NEEDLE VALVE		MAX	MAXIMUM
		PRESSURE RELIEF OR SAFETY VALVE		NC	NOISE CRITERIA
		HOSE END DRAIN VALVE		DB	DECIBEL
		STRAINER W/HOSE END DRAIN VALVE & CAP		EMS	ENERGY MANAGEMENT SYSTEM
		AUTOMATIC AIR VENT		SAF	SUPPLY AIR FAN
		FLOW METER FITTING		OAF	OUTSIDE AIR FAN
		COMBINATION SHUT-OFF/BALANCING VALVE		RAF	RETURN AIR FAN
		UNION		EAF	EXHAUST AIR FAN
		FLANGE		LBS	POUNDS
		CONCENTRIC REDUCER		TEMP	TEMPERATURE
		ECCENTRIC REDUCER		EXH	EXHAUST
		FLEXIBLE CONNECTION (PIPING)		OC	ON CENTER
		MANUAL AIR VENT		TONS	TONS OF REFRIGERATION
		THERMOMETER		SQ	SQUARE
		PRESSURE GAUGE W/NEEDLE VALVE		OAT	OUTSIDE AIR TEMPERATURE
		TEMPERATURE SENSOR (NIGHT SETBACK)		STD	STANDARD
	T'STAT	THERMOSTAT		ΔT	TEMPERATURE DIFFERENCE
		FAN SWITCH		%	PERCENT
		STATIC PRESSURE GAUGE		EFF	EFFICIENCY
	DP	DIFFERENTIAL PRESSURE CONTROLLER		ELECT. CHAR.	ELECTRICAL CHARACTERISTICS
	DPT	DIFFERENTIAL PRESSURE TRANSMITTER		CAP	CAPACITY
	AFC	AUTOMATIC FLOW CONTROL VALVE		SB	STAND-BY
	FS	FLOW SWITCH		FT. H ₂ O	FEET WATER GAUGE
		STATIC PRESSURE CONTROLLER		IN. H ₂ O	INCHES WATER GAUGE
		PIPE ALIGNMENT GUIDE		ATC	AUTOMATIC TEMPERATURE CONTROL
		PIPE ANCHOR		EX	EXISTING
		EXPANSION LOOP		RMV	REMOVE EXISTING
		UNIT HEATER		CON	CONNECT TO EXISTING
		PITCH OF PIPE, % SLOPE		DEM	DEMOLITION ENDS HERE
		PIPE-TURN DOWN		VSD	VARIABLE SPEED DRIVE
		PIPE-TURN UP		F	DEGREES FAHRENHEIT
		SOLENOID VALVE		CFM	CUBIC FEET PER MINUTE
		END CAP		GPM	GALLONS PER MINUTE
		BLIND FLANGE		EAT	ENTERING AIR TEMPERATURE
		DIRECTION OF FLOW		LAT	LEAVING AIR TEMPERATURE
				EWT	ENTERING WATER TEMPERATURE
				LWT	LEAVING WATER TEMPERATURE
				DB	DRY BULB
				WB	WET BULB
				PD	PRESSURE DROP
				WPD	WATER PRESSURE DROP
				APD	AIR PRESSURE DROP
				SP	STATIC PRESSURE
				ESP	EXTERNAL STATIC PRESSURE
				PSI	POUNDS PER SQUARE INCH
				HP	HORSEPOWER
				BHP	BRAKE HORSEPOWER
				RPM	REVOLUTIONS PER MINUTE
				FPM	FEET PER MINUTE
				A	AMPS
				V	VOLTS
				H ₂	HERTZ
				DIFF	DIFFUSER
				REG	REGISTER
				AFF	ABOVE FINISHED FLOOR
				W/F	WITH
				FO	FLAT OVAL
				SS	STAINLESS STEEL
				HT	HEIGHT
				REQ'D	REQUIRED
				DWG	DRAWING
				No.	NUMBER
				VAV	VARIABLE AIR VOLUME
				EF	EXHAUST FAN
				FZ	FREEZE STAT
				SD	SMOKE DAMPER
				SPC	STATIC PRESSURE CONTROLLER
				AHU	AIR HANDLING UNIT
				OAT	OUTSIDE AIR TEMPERATURE
				SWT	SUPPLY WATER TEMPERATURE
				NO	NORMALLY OPEN
				NC	NORMALLY CLOSED
				C	CLOSED

NOTE: NOT ALL SYMBOLS AND ABBREVIATIONS MAY BE USED

ROSA PARKS MIDDLE SCHOOL EMERGENCY GENERATOR AND ELECTRICAL UPGRADE

19200 OLNEY MILL RD,
OLNEY, MD 20832



MONTGOMERY COUNTY PUBLIC SCHOOLS
850 HUNGERFORD DRIVE,
ROCKVILLE, MD 20850

MECHANICAL/ELECTRICAL/PLUMBING ENGINEERS

ALBAN ENGINEERING, INC

303 INTERNATIONAL CIRCLE
SUITE 450
HUNT VALLEY, MARYLAND 21030
PH: (410) 842-6411

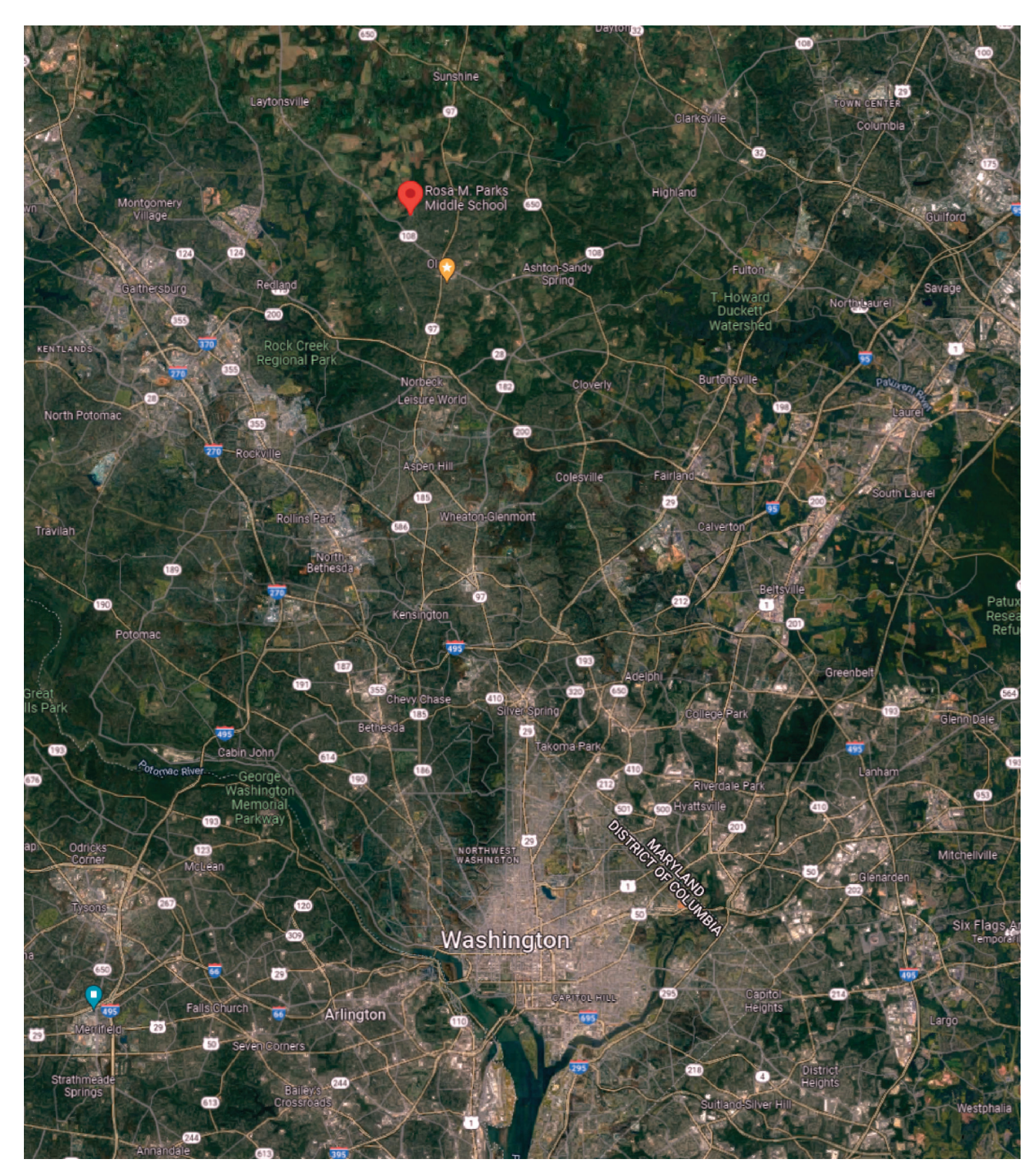
NO.	DATE	DESCRIPTION
		CS COVER SHEET
		ELECTRICAL
		E001 - ELECTRICAL LEGEND, CONVENTIONS, AND ABBREVIATIONS
		ED101 - PARTIAL FLOOR PLAN - AREA A - DEMOLITION
		E101 - PARTIAL FLOOR PLAN - AREA A
		E102 - PARTIAL FLOOR PLAN - AREA B
		E103 - PARTIAL FLOOR PLAN - AREA C
		E104 - PARTIAL 2ND FLOOR PLAN - AREA B
		E105 - PARTIAL 2ND FLOOR PLAN - AREA B
		E601 - PANEL SCHEDULES AND PICTURES
		MECHANICAL/PLUMBING
		MP001 - MECH/PLUMB LEGEND, CONVENTIONS, RISER, AND ABBREVIATIONS
		MPD101 - PARTIAL FLOOR PLAN - AREA A - DEMOLITION
		MP101 - PARTIAL FLOOR PLAN - AREA A

SCOPE OF WORK

THE SCOPE OF WORK INCLUDES THE UPGRADE OF THE CURRENT EMERGENCY ELECTRICAL DISTRIBUTION SYSTEM INCLUDING REPLACING THE EXISTING GENERATOR, ADDING LIFE SAFETY AND NON-LIFE SAFETY PANELS/TRANSFORMERS, AND ADDING DESIRED CIRCUITS TO EMERGENCY POWER.

THE EXISTING GENERATOR IS TO REMAIN ACTIVE AND RUN EXISTING EMERGENCY LOADS UNTIL NEW GENERATOR IS INSTALLED.

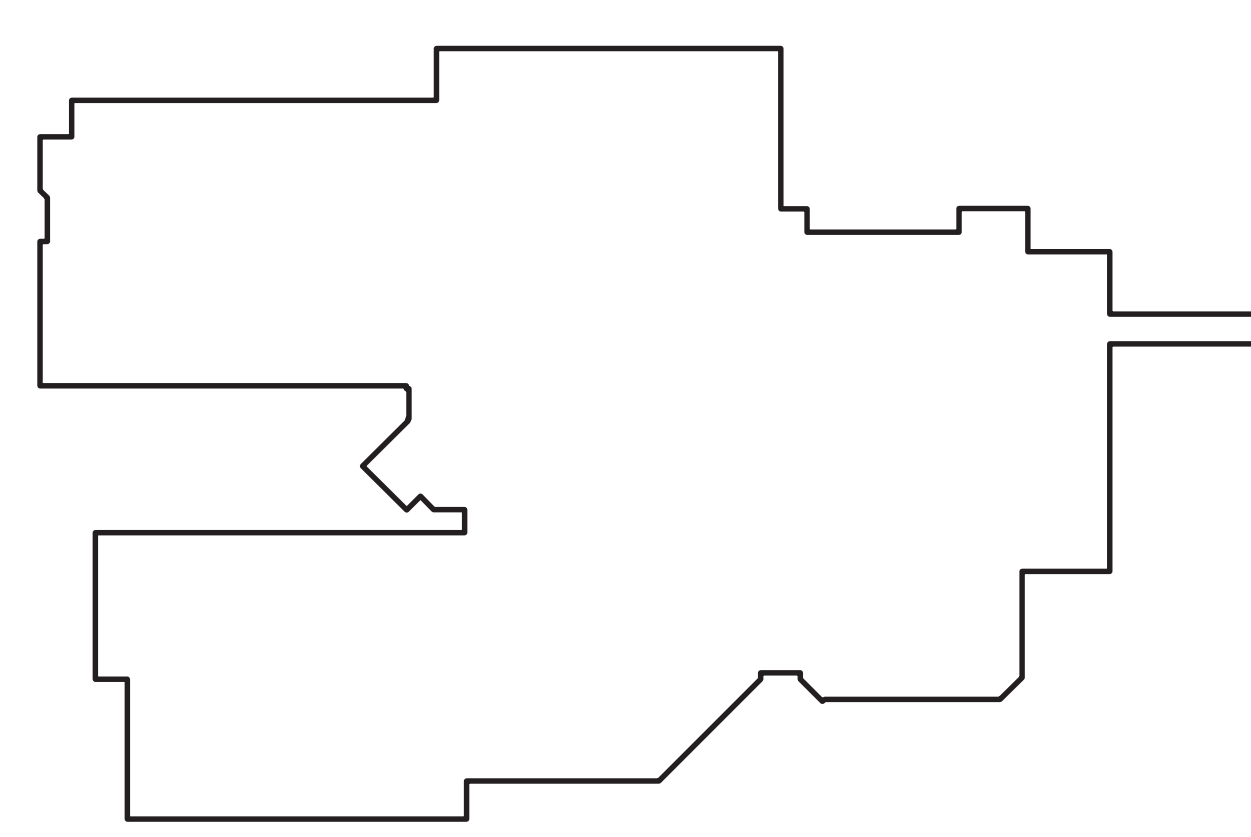
LOCATION MAP NTS



VICINITY MAP NTS



KEY PLAN NTS



COVER SHEET

ROSA PARKS MS - EMERGENCY UPGRADE
OLNEY, MD 20832

PN# 22080

PROJECT MANAGER DRH

DESIGNER BSF

CS

BID SET
06-09-2023

PROFESSIONAL CERTIFICATION: I HEREBY CERTIFY THAT THESE DOCUMENTS WERE PREPARED OR APPROVED BY ME OR UNDER MY CLOSE PERSONAL SUPERVISION AND THAT I AM A DULY LICENSED PROFESSIONAL ENGINEER UNDER THE LAWS OF THE STATE OF MARYLAND. LICENSE No. 51966, HUNT VALLEY, MD 21030 EXPIRATION DATE: 12-13-2023

ALBAN ENGINEERING, INC
303 INTERNATIONAL CIRCLE
HUNT VALLEY, MD 21030
410.842.6411
www.albanengineering.com

GENERAL NOTES:

- THE ELECTRICAL CONTRACTOR SHALL FAMILIARIZE HIMSELF WITH THE DRAWINGS OF ALL OTHER TRADES ON THE PROJECT. ELECTRICAL OR SYSTEMS CONNECTIONS INDICATED ON ARCHITECTURAL, MECHANICAL, CIVIL, STRUCTURAL, KITCHEN AND ALL OTHER DRAWINGS WHICH ARE PART OF THIS PROJECT, SHALL BE CONSIDERED A PART OF THIS CONTRACT AND SHALL BE PROVIDED BY THE ELECTRICAL CONTRACTOR AT NO EXTRA COST TO THE OWNER.
- THE ELECTRICAL DRAWINGS ARE DIAGRAMMATIC IN NATURE AND AS SUCH SHALL NOT BE SCALED. REFER TO THE ARCHITECTURAL DRAWINGS FOR EXACT LOCATIONS OF DEVICES AND EQUIPMENT AND DIMENSIONAL INFORMATION PRIOR TO ROUGH-IN. COORDINATE LOCATIONS OF MECHANICAL EQUIPMENT WITH MECHANICAL CONTRACTOR PRIOR TO ROUGH-IN OF SERVICE EQUIPMENT AND WIRING.
- COORDINATE MOUNTING HEIGHTS OF ALL DEVICES WITH ARCHITECTURAL PLANS, SECTIONS, ELEVATIONS AND CASEWORK DRAWINGS.
- THE CONTRACTOR SHALL BE RESPONSIBLE FOR DETERMINING THE EXACT ROUTING OF WIRING AND CONDUITS AND SHALL BE RESPONSIBLE FOR SIZING ALL BRANCH CIRCUIT WIRING TO LIMIT VOLTAGE DROP TO 3%. CONTRACTOR SHALL SIZE CONDUIT TO ACCOMMODATE WIRING PER NEC. 20 AMPERE CIRCUITS SHALL BE SIZED AS FOLLOWS:

20 AMPERE CIRCUITS				
120 VOLT		277 VOLT		MINIMUM CONDUIT SIZE
WIRING LENGTH	WIRE SIZE	WIRING LENGTH	WIRE SIZE	
0' - 100'	#12	0' - 130'	#12	3/4"
101' - 200'	#10	130' - 210'	#10	3/4"
201' - 150'	#8	210' - 340'	#8	3/4"
151' - 250'	#6	340' - 540'	#6	3/4"
OVER 250'	#4	OVER 540'	#4	1"

NOTES:
BRANCH CIRCUITS IN PANELBOARDS WITH 200% RATED NEUTRAL BUS AND ALL DIMMED LIGHTING CIRCUITS & ECM MOTORS SHALL HAVE DEDICATED NEUTRAL CONDUCTORS.

WIRING AND CONDUIT SIZES INDICATED IN PANEL SCHEDULES ARE MINIMUM ONLY. CONTRACTOR SHALL BE RESPONSIBLE FOR DETERMINING EXACT WIRING AND CONDUIT SIZES. CONTRACTOR SHALL PROVIDE SPLICE BLOCKS AND REDUCING PINS AS REQUIRED TO TERMINATE WIRING AND MAKE FINAL CONNECTIONS.

- ELECTRICAL BOXES IN FIRE RATED PARTITIONS SHALL NOT EXCEED 16 SQUARE INCHES IN AREA (IF 4"x4"). SHALL BE MADE OF STEEL, AND SHALL BE SUCH THAT THE CUMULATIVE AREA OF BOX "CUTOUTS" IN THE FIREWALL DOES NOT EXCEED 100 SQUARE INCHES PER 100 SQUARE FEET OF WALL AREA. ELECTRICAL BOXES ON OPPOSITE SIDES OF THE SAME FIREWALL SHALL BE SEPARATED BY A HORIZONTAL AND VERTICAL DISTANCE OF NOT LESS THAN 24 INCHES. THE ELECTRICAL CONTRACTOR SHALL MAKE MINOR ADJUSTMENTS, AS NECESSARY, TO ELECTRICAL BOX LOCATIONS TO ENSURE COMPLIANCE WITH THIS REQUIREMENT SINCE BOX LOCATIONS ARE TYPICALLY NOT DIMENSIONED ON THE DRAWINGS. CONSULT ARCHITECT IF CLARIFICATION IS REQUIRED.
- NEW WALLS ARE SHADED ON THE FLOOR PLANS, EXISTING WALLS ARE NOT SHADED. CONTRACTOR SHALL BE RESPONSIBLE FOR COORDINATING MOUNTING OF DEVICES WITH WALL TYPE.

DEMOLITION NOTES:

- DEMOLITION DRAWINGS ARE DIAGRAMMATIC IN NATURE; NO ATTEMPT HAS BEEN MADE TO SHOW ALL EXISTING ELECTRICAL WORK IN AREAS INDICATED TO BE RENOVATED. ALL EXISTING ELECTRICAL WORK IS TO BE REMOVED UNLESS OTHERWISE NOTED. WHEN AN ITEM IS TO BE REMOVED, REMOVE ALL ASSOCIATED ELECTRICAL WORK BACK TO POINT-OF-SOURCE.
- WHERE WORK PASSES THROUGH THE RENOVATION AREA TO SERVE OTHER PORTIONS OF THE BUILDING, OR WORK IN THE RENOVATION AREA INDICATED TO BE REMAIN, IT SHALL BE SUITABLY RELOCATED AND THE SYSTEMS RESTORED TO NORMAL. COORDINATE ANY OUTAGES WITH OWNER 7 DAYS IN ADVANCE.
- WORK INDICATED TO REMAIN SHALL BE SUITABLY PROTECTED AGAINST DAMAGE.
- TURN OVER ALL CIRCUIT BREAKERS, LIGHTING AND APPLIANCE PANELBOARD COVERS, CONTACTORS, MOTOR STARTERS, TIME CLOCKS, BATTERY PACKS, CLOCKS, SPEAKERS, ETC THAT ARE IN GOOD CONDITION TO OWNER. CONTACT OWNER FOR VERIFICATION IF ITEMS ARE IN QUESTIONABLE CONDITION.
- COORDINATE ALL DEMOLITION AND CONSTRUCTION ACTIVITIES WITH THE OWNER TO MINIMIZE DISRUPTION OF THE NORMAL DAILY FUNCTIONING OF THE OWNERS OCCUPIED AREAS.
- REMOVE AND REINSTALL ALL EXISTING CEILING MOUNTED DEVICES INDICATED TO REMAIN AS REQUIRED TO SUIT NEW CEILING INSTALLATION.
- ALL REMOVED DEVICE WALL PENETRATIONS SHALL BE PATCHED AND PAINTED TO MATCH EXISTING WALL COLOR OR WALL COLOR PER ARCHITECT'S DIRECTION.

ELECTRICAL LEGEND:
(MOUNTING HEIGHTS ARE TO CENTERLINE OF DEVICE UON)

CONDUIT

HOMERUN TO PANELBOARD; REFER TO PANEL SCHEDULES FOR MINIMUM WIRE AND CONDUIT SIZES

BRANCH CIRCUIT CONDUIT AND WIRING CONCEALED IN CEILING OR WALL SPACE, OR SURFACE MOUNTED WHERE NO CEILING OR WALL SPACE EXISTS; REFER TO PANEL SCHEDULES FOR MINIMUM WIRE AND CONDUIT SIZES

BRANCH CIRCUIT CONDUIT AND WIRING IN SLAB, UNDER FLOOR OR UNDERGROUND; REFER TO PANEL SCHEDULES FOR MINIMUM WIRE AND CONDUIT SIZES

POWER

DISTRIBUTION PANELBOARD, SURFACE MOUNTED AT 6'-6" AFF TO TOP OF PANEL.

PANELBOARD; RECESSED, SURFACE MOUNTED; MOUNT AT 6'-6" AFF TO TOP OF PANEL.

PANELBOARD; RECESSED, SURFACE MOUNTED; MOUNT AT 5'-6" AFF TO TOP OF PANEL.

PANELBOARD; RECESSED, SURFACE MOUNTED; MOUNT AT 5'-6" AFF TO TOP OF PANEL.

SINGLE POLE MANUAL MOTOR STARTING SWITCH WITH HOA SWITCH; MOUNT AT 48" AFF IN NEMA 1 ENCLOSURE UON

MOTOR; AS NOTED

UNIT HEATER

SAFETY DISCONNECT SWITCH; FUSED, NONFUSED IN NEMA 1 ENCLOSURE UON; MOUNT AT 48" AFF UON; RATING AND FUSING AS NOTED

ENCLOSED CIRCUIT BREAKER IN NEMA 1 ENCLOSURE UON; MOUNT AT 5'-6" TO TOP AFF UON; SIZE AS NOTED

COMBINATION TYPE MOTOR STARTER; FVNR WITH CONTROL XFMR, RED AND GREEN INDICATING LIGHTS; HOA SELECTOR SWITCH AND CIRCUIT BREAKER DISCONNECT SWITCH IN NEMA 1 ENCLOSURE UON; MOUNT AT 5'-6" TO TOP AFF UON

JUNCTION BOX; CEILING, WALL MOUNTED

TO GROUND

EPO PUSHBUTTON, UON; MOUNT 48" AFF AS INDICATED

ELECTRICAL METER

SURGE PROTECTION DEVICE

VARIABLE FREQUENCY DRIVE FURNISHED UNDER DIVISION 15, INSTALLED UNDER DIVISION 16

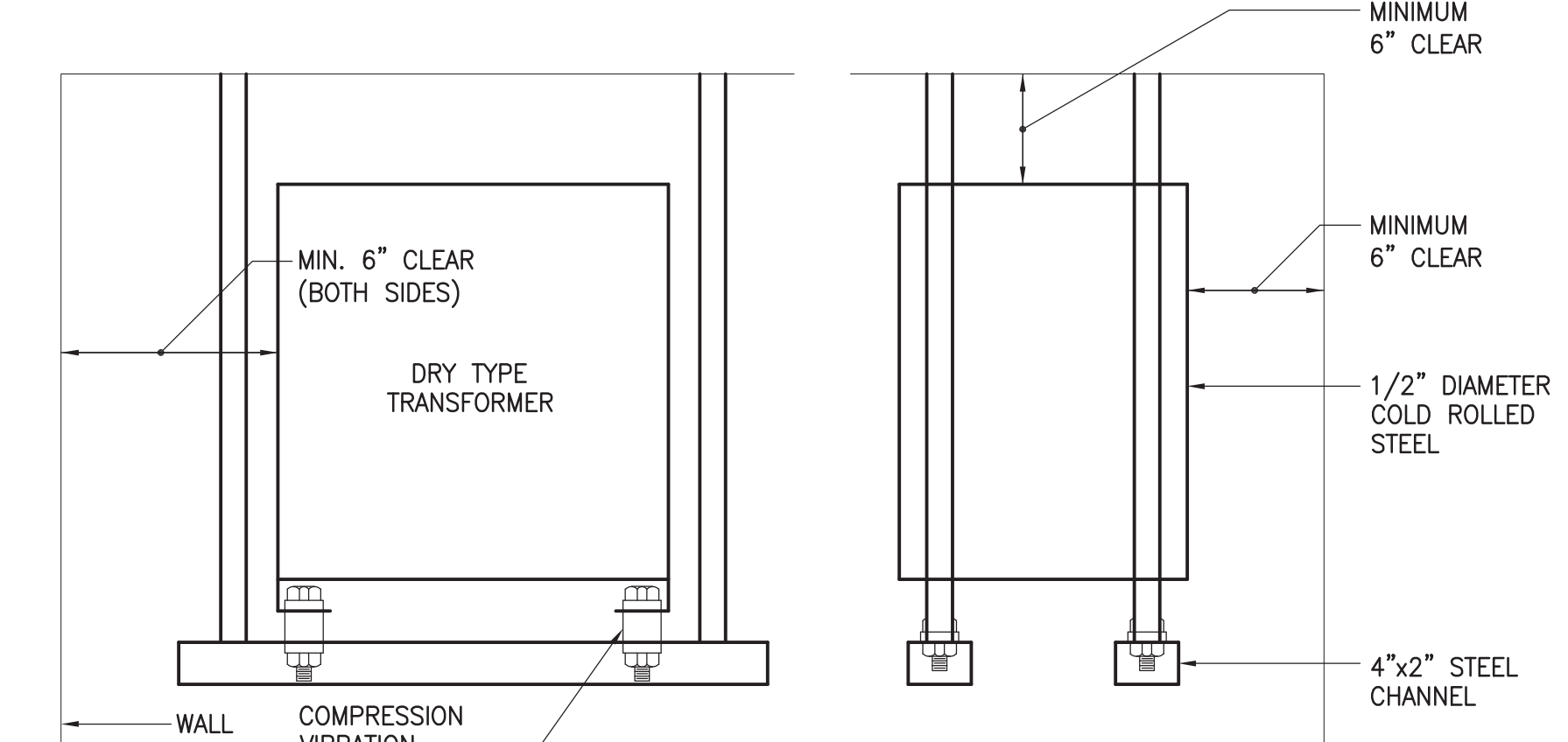
TRANSFORMER

MISCELLANEOUS

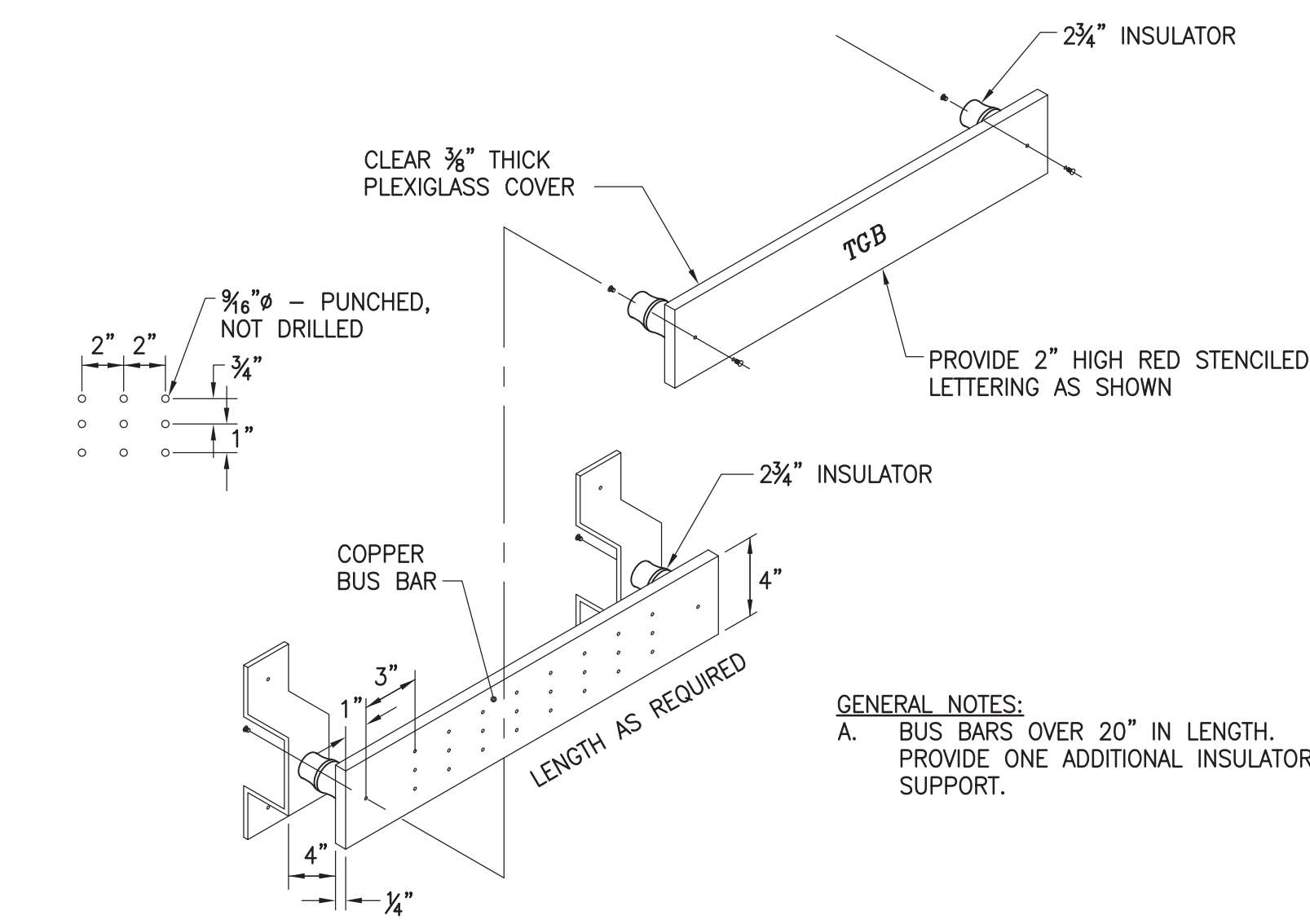
- REFERENCE TO DRAWING NOTE
- DETAIL REFERENCE: DETAIL NUMBER/DRAWING NUMBER
- ITEMS SHOWN DASHED/HEAVY ARE TO BE REMOVED
- ITEMS SHOWN SOLID/LIGHT ARE EXISTING TO REMAIN
- ITEMS SHOWN DASHED-DOTTED/LIGHT ARE TO OCCUR IN FUTURE PHASES

ABBREVIATIONS:

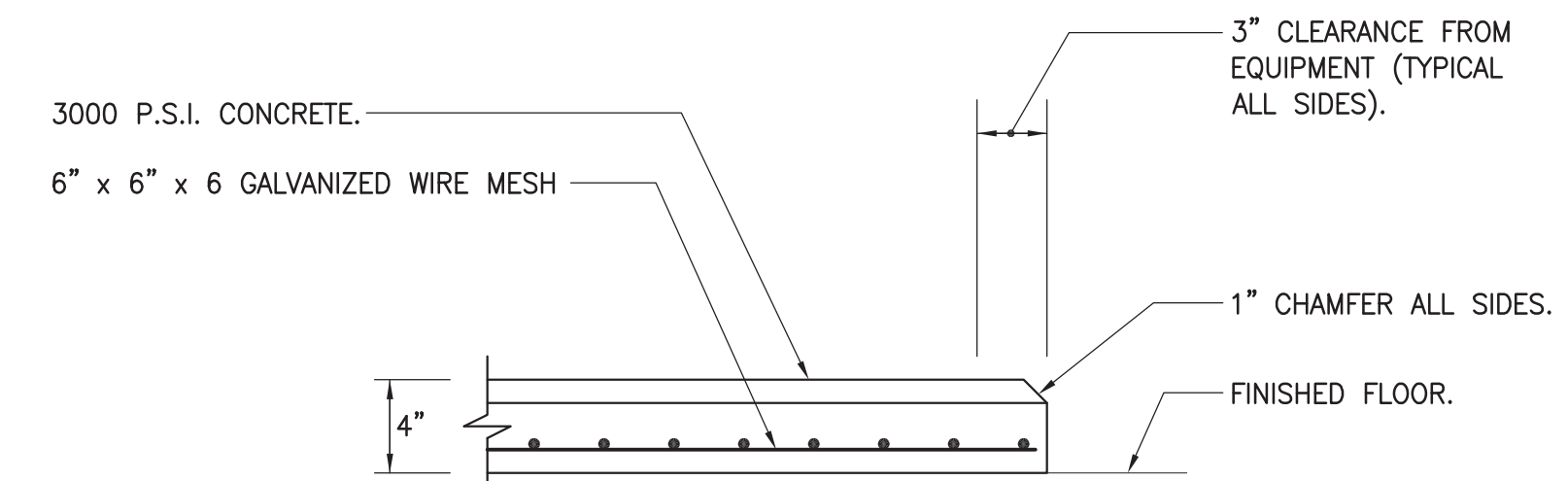
- A AMPERE, AMPERES
- AFF ABOVE FINISHED FLOOR
- AHU AIR HANDLING UNIT
- AIC AMPERE INTERRUPTING CAPACITY
- ATS AUTOMATIC TRANSFER SWITCH
- AWG AMERICAN WIRE GAUGE
- CATV CABLE TELEVISION
- CCTV CLOSED CIRCUIT TELEVISION
- C CONDUIT
- CB CIRCUIT BREAKER
- DWG DRAWING
- DWV ENCLOSED CIRCUIT BREAKER
- ECB EXHAUST FAN
- EPO EMERGENCY POWER OFF
- ETR EXISTING TO REMAIN
- EWG ELECTRIC WATER COOLER
- EX EXISTING
- FAAP FIRE ALARM ANNUNCIATOR PANEL
- FACP FIRE ALARM CONTROL PANEL
- FIA FULL LOAD AMPERES
- FSS FUSED SAFETY SWITCH
- G GROUND
- GFEF GROUND FAULT EQUIPMENT PROTECTION
- GFI GROUND FAULT INTERRUPTING
- HOA HAND-OFF-AUTOMATIC
- HP HORSEPOWER
- HWH HOT WATER HEATER GENERATOR
- IDF INTERMEDIATE DISTRIBUTION FRAME
- IMC INTERMEDIATE METAL CONDUIT
- KCMIL THOUSAND CIRCULAR MILS
- KVA KILOVOLT-AMPERES
- KW KILOWATT
- LRA LOCKED ROTOR AMPERES
- MCA MINIMUM CIRCUIT AMPERES
- MCB MAIN CIRCUIT BREAKER
- MDF MAIN DISTRIBUTION FRAME
- MLO MAIN LUGS ONLY
- MPOP MAIN POINT OF PRESENCE
- MSB MAIN SWITCHBOARD
- MTD MOUNTED
- MH MOUNTING HEIGHT/MANHOLE
- NEC NATIONAL ELECTRICAL CODE
- NEMA NATIONAL ELECTRICAL MANUFACTURER'S ASSOCIATION
- NF/SS NONFUSED SAFETY SWITCH
- NO NUMBER
- OC ON CENTERS
- P POLE, POLES
- Ø PHASE
- PNL PANEL
- PVC POLYVINYL CHLORIDE
- RAF RETURN AIR FAN
- RGS RIGID GALVANIZED STEEL
- RX REMOVE EXISTING
- TYP TYPICAL
- TVSS TRANSIENT VOLTAGE SURGE SUPPRESSOR
- UH UNIT HEATER
- V VOLT, VOLTS
- VR VANDALL RESISTANT
- WP WEATHERPROOF
- W WATTS, WIRE, WIRES
- XFMR TRANSFORMER
- TB TELEPHONE TERMINAL BOARD
- UTP UNSHIELDED TWISTED PAIR
- UON UNLESS OTHERWISE NOTED



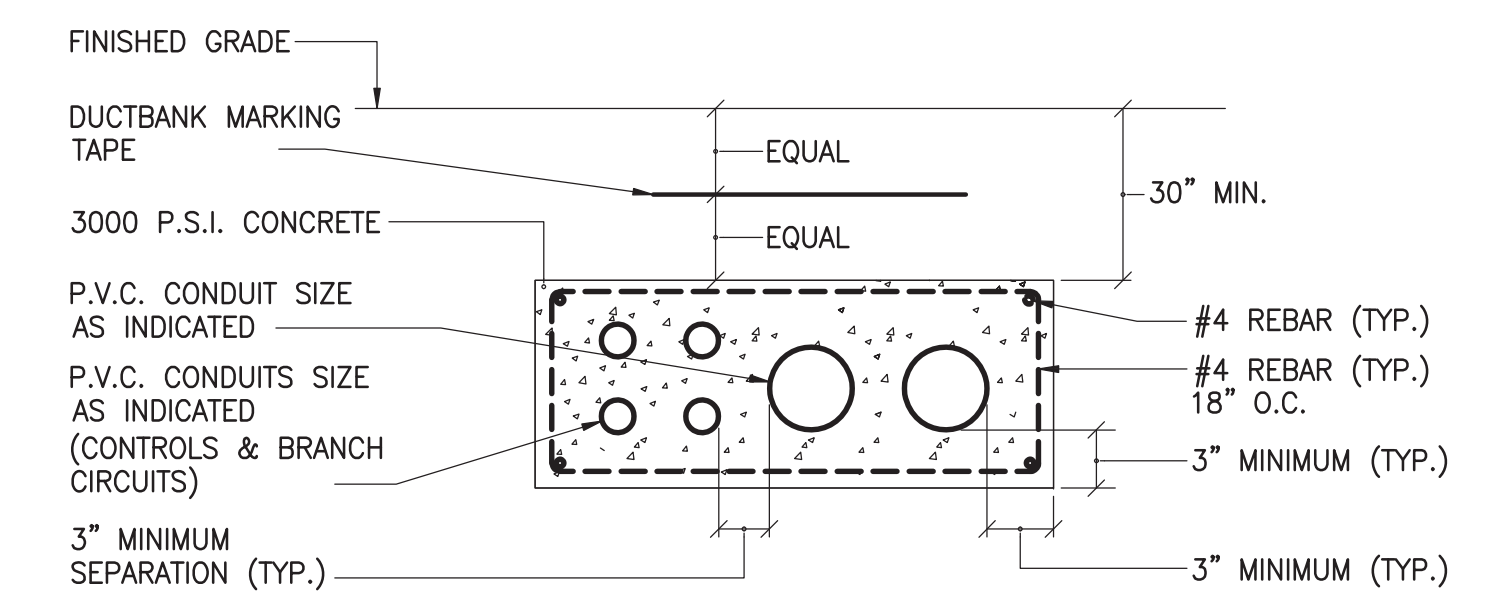
1 E001 DETAIL - SUSPENDED MOUNTING OF DRY TYPE TRANSFORMER



2 E001 DETAIL - GROUNDING BUS BAR

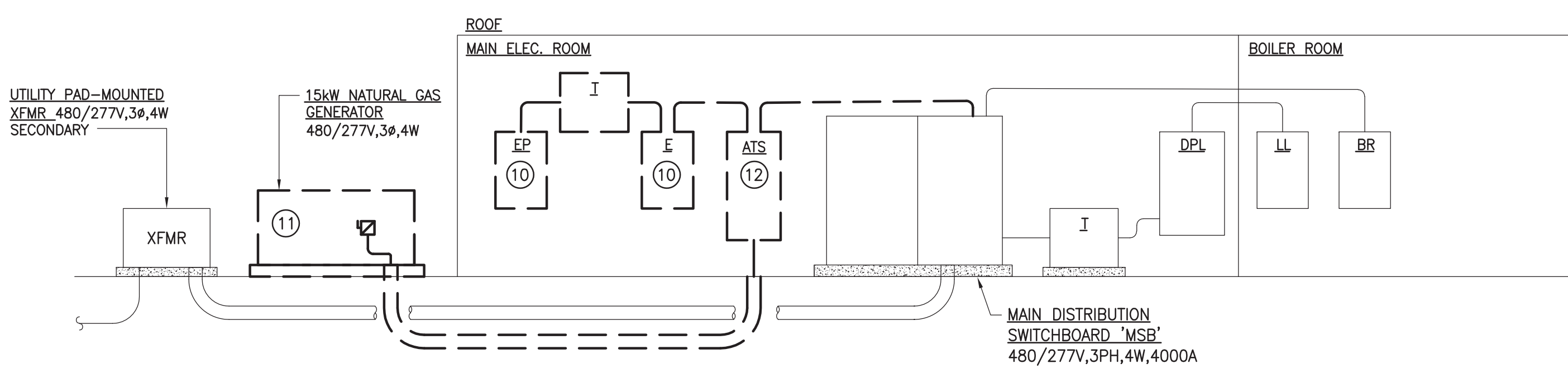


3 E001 DETAIL - CONCRETE HOUSEKEEPING PAD

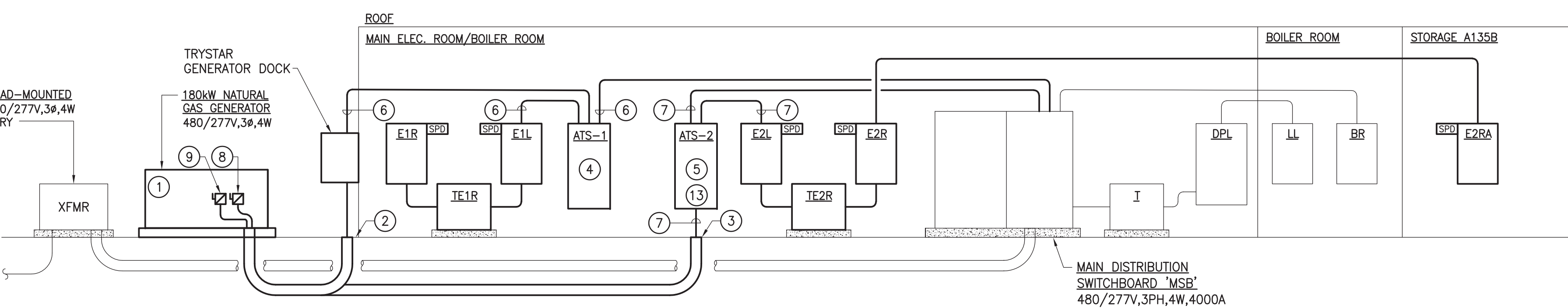


4 E001 DETAIL - GENERATOR DUCTBANK #1 & #2

PARTIAL SCHEMATIC POWER RISER DIAGRAM - DEMOLITION



PARTIAL SCHEMATIC POWER RISER DIAGRAM - NEW WORK



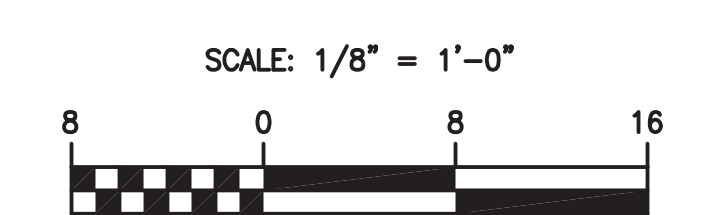
GENERAL NOTES:

- REFER TO PANEL SCHEDULES FOR ADDITIONAL INFORMATION.
- PROVIDE TRANSFORMER PRIMARY DISCONNECTS, WHERE INDICATED, SIZED TO MATCH (OR EXCEED) THE RATING OF THE PRIMARY CB INDICATED ON THE DRY TYPE TRANSFORMER SCHEDULE.
- CONTRACTOR SHALL REDUCE FEEDER SIZE (IF REQUIRED) WITHIN 5'-0" OF EQUIPMENT TO ACCOMMODATE LUG SIZES.
- PROVIDE PLACARD POSTING THE AVAILABLE FAULT CURRENT AT THE MAIN SERVICE.
- PROVIDE POWER RISER DIAGRAM, LAMINATED AND FRAMED 30" x 42" ON MYLAR AND COORDINATE LOCATION WITH OWNER IN MAIN ELECTRICAL ROOM.
- ALL PANELBOARDS WITH 84-POLES OR LESS SHALL BE IN A SINGLE INTERIOR BACKBOX.
- PROVIDE LABEL ON ALL TRANSFORMERS INDICATING WHERE IT IS SERVED FROM. LABEL SHALL COMPLY WITH NEC.
- PANEL CIRCUIT BREAKER KNOCKOUTS SHALL NOT BE REMOVED UNLESS NEEDED FOR USED CIRCUITS.

RISER NOTES:

- MOUNT GENERATOR OUTPUT CIRCUIT BREAKERS WITHIN GENERATOR ENCLOSURE.
- GENERATOR DUCTBANK #1.
- GENERATOR DUCTBANK #2.
- 4P-100A, 42KA WITHSTAND RATING.
- 4P-150A, 42KA WITHSTAND RATING.
- (4) #3 + #6GW - 1-1/2"C.
- (4) #1/0 + #6GW - 1-1/2"C.
- 3P-100A ELECTRONIC TRIP LSI-TYPE CIRCUIT BREAKER (LIFE SAFETY LOADS).
- 3P-150A ELECTRONIC TRIP LSI-TYPE CIRCUIT BREAKER (STANDBY LOADS).
- TEMPORARILY FEED ALL EXISTING LOADS ON THESE PANELS FROM CORRESPONDING E2 PANELS AND REMOVE EQUIPMENT ONCE NEW GENERATOR AND ELECTRICAL INFRASTRUCTURE IS FULLY INSTALLED AND ACTIVE, RELOCATE CIRCUITS AS INDICATED ON PANEL SCHEDULES.
- REMOVE EQUIPMENT ONCE NEW EMERGENCY INFRASTRUCTURE IS FULLY INSTALLED AND ACTIVE
- MAINTAIN FEEDER FOR TEMPORARY CONNECTION TO ATS-2. MODIFY/EXTEND FEEDER AS REQUIRED.
- TEMPORARILY CONNECT MAINTAINED FEEDER TO ATS-2 TO SERVE EXISTING EMERGENCY LOADS UNTIL NEW EMERGENCY ELECTRICAL SYSTEM IS FULLY INSTALLED AND ACTIVE.

KEY PLAN



REVISIONS	DATE	DESCRIPTION
NO.		

THIS DRAWING AND THE DESIGN INFORMATION CONTAINED HEREIN ARE THE PROPERTY OF ALBAN ENGINEERING, INC. AND SHALL NOT BE ALTERED OR REUSED IN WHOLE OR IN PART WITHOUT THE WRITTEN PERMISSION OF ALBAN ENGINEERING, INC. Copyright © 2023

PROFESSIONAL CERTIFICATION: I, ROSA PARRIS MS, A PROFESSIONAL ENGINEER UNDER THE LAWS OF THE STATE OF MARYLAND, LICENSE NO. 51896, EXPIRES 12-13-2023.

ALBAN ENGINEERING, INC
303 INTERNATIONAL CIRCLE
HUNT VALLEY, MD 21080
www.albanengineering.com
410.842.6411

ELECTRICAL LEGEND, CONVENTIONS, AND ABBREVIATIONS
ROSA PARRIS MS - EMERGENCY UPGRADE
OLNEY, MD 20832

PN#	22080
PROJECT MANAGER	DRH
DESIGNER	BSF

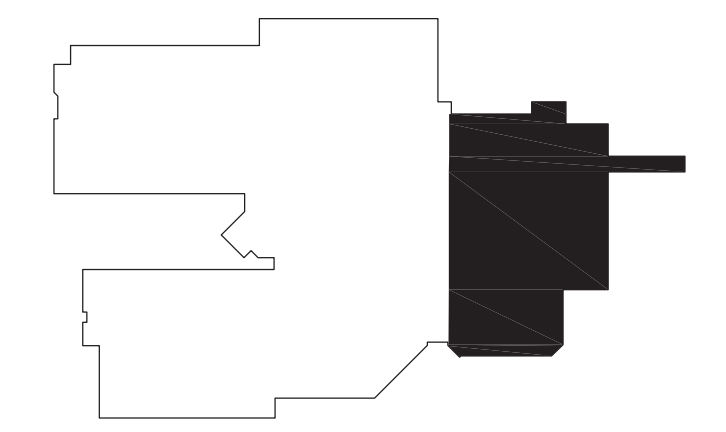
E001

BID CHECK SET 05-23-2023

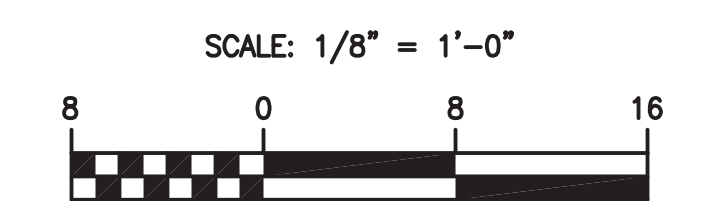
MATCHLINE - AREA B



PARTIAL FLOOR PLAN - AREA A
SCALE: 1/8" = 1'-0"



KEY PLAN



GENERAL NOTES:

1. REFER TO PANEL SCHEDULES FOR ADDITIONAL INFORMATION.
2. CONTRACTOR SHALL REDUCE FEEDER SIZE (IF REQUIRED) WITHIN 5'-0" OF EQUIPMENT TO ACCOMMODATE LUG SIZES.
3. ALL PANELBOARDS WITH 84-POLES OR LESS SHALL BE IN A SINGLE INTERIOR BACKBOX.
4. VERIFY APPROPRIATE BREAKERS ASSOCIATED WITH MECHANICAL EQUIPMENT TO BE ON EMERGENCY POWER ARE BEING RELOCATED TO EMERGENCY PANELS.

DRAWING NOTES:

- ① RECIRCUIT DEVICE/EQUIPMENT AND ASSOCIATED ELECTRICAL APPURTENANCES TO INDICATED EMERGENCY PANEL. REFER TO PANEL SCHEDULES FOR MORE INFORMATION. MODIFY/EXTEND CIRCUIT AS REQUIRED.
- ② PANEL WITH CIRCUITS TO BE RELOCATED TO EMERGENCY PANELS. REFER TO PANEL SCHEDULES FOR MORE INFORMATION.
- ③ RECIRCUIT ALL LIFE SAFETY BRANCH CIRCUITS (LIGHTING/FA) ON THIS PANEL TO NEW EMERGENCY E1 PANELS AND RECIRCUIT ALL NON-LIFE SAFETY BRANCH CIRCUITS ON THIS PANEL TO NEW EMERGENCY E2 PANELS. REFER TO PANEL SCHEDULES FOR MORE INFORMATION. MODIFY/EXTEND CIRCUIT AS REQUIRED.
- ④ GENERATOR TO REMAIN ACTIVE AND RUNNING CURRENT EMERGENCY LOADS UNTIL NEW GENERATOR IS INSTALLED. ONCE NEW GENERATOR IS INSTALLED, RELOCATE REMAINING CIRCUITS TO NEW EMERGENCY PANELS AND REMOVE EXISTING GENERATOR AND EXISTING EMERGENCY EQUIPMENT.
- ⑤ WALK-IN COOLER.
- ⑥ WALK-IN FREEZER.

NO.	DATE	REVISIONS	DESCRIPTION

PROFESSIONAL CERTIFICATION: I AM A PROFESSIONAL ENGINEER IN THE STATE OF MARYLAND. MY LICENSE NO. IS 151896. MY EXPIRATION DATE IS 12-13-2023.

THIS DRAWING AND THE DESIGN THEREOF ARE THE PROPERTY OF ALBAN ENGINEERING, INC. AND SHALL NOT BE ALTERED OR REUSED IN WHOLE OR IN PART WITHOUT THE WRITTEN PERMISSION OF ALBAN ENGINEERING, INC. Copyright © 2023

ALBAN ENGINEERING, INC.
303 INTERSTATE 40 CIRCLE
HUNT VALLEY, MD 21080
www.albanengineering.com

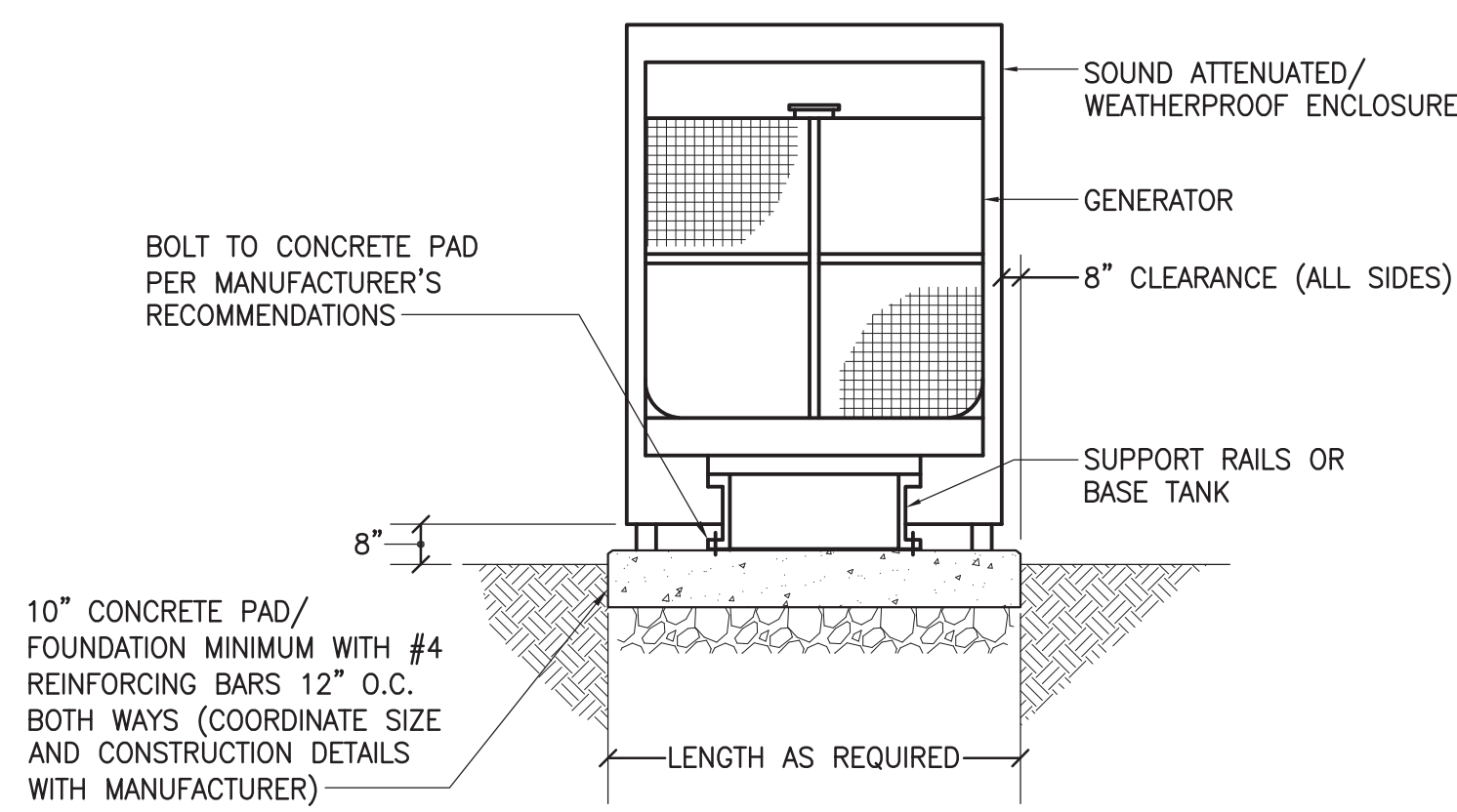
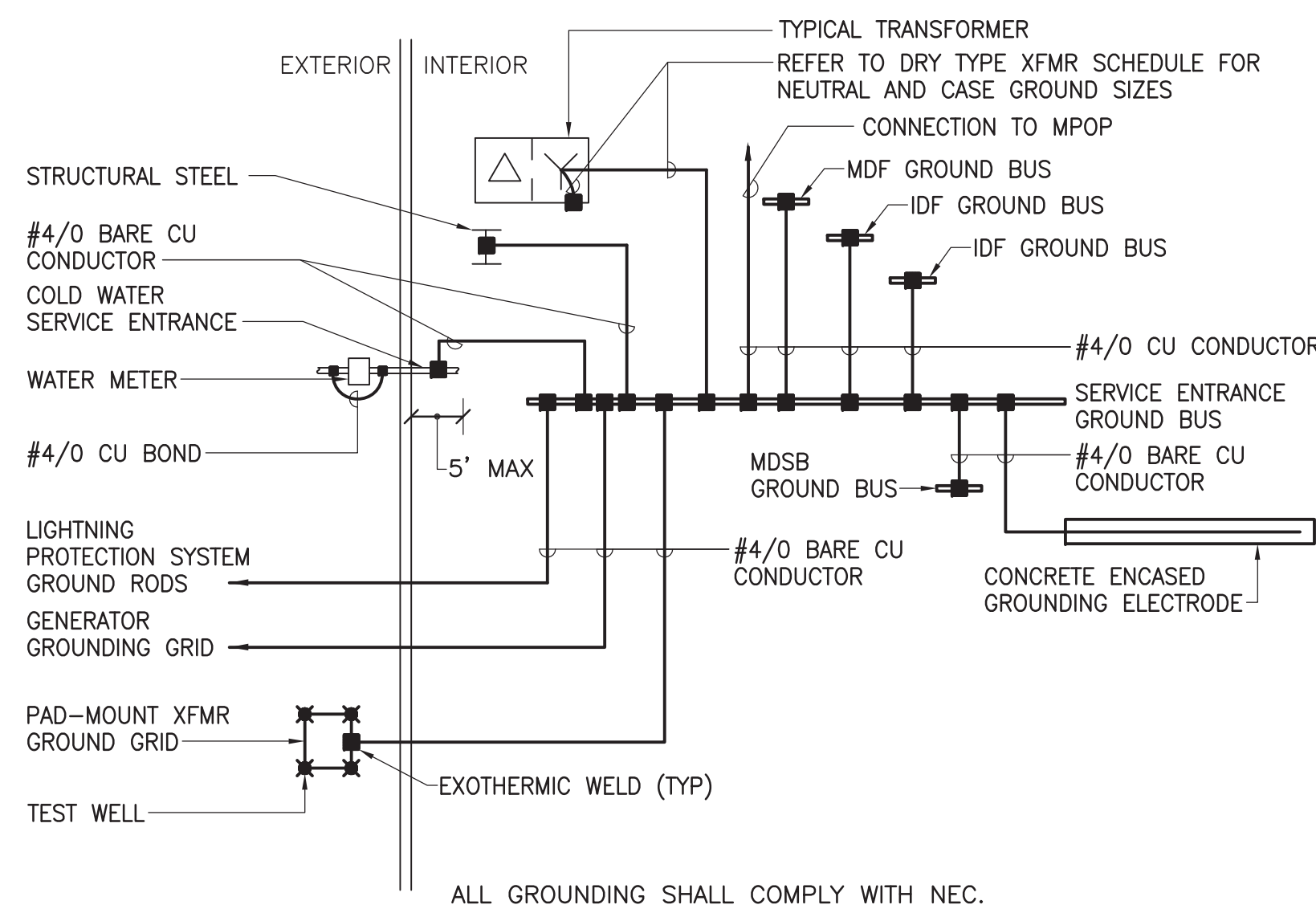
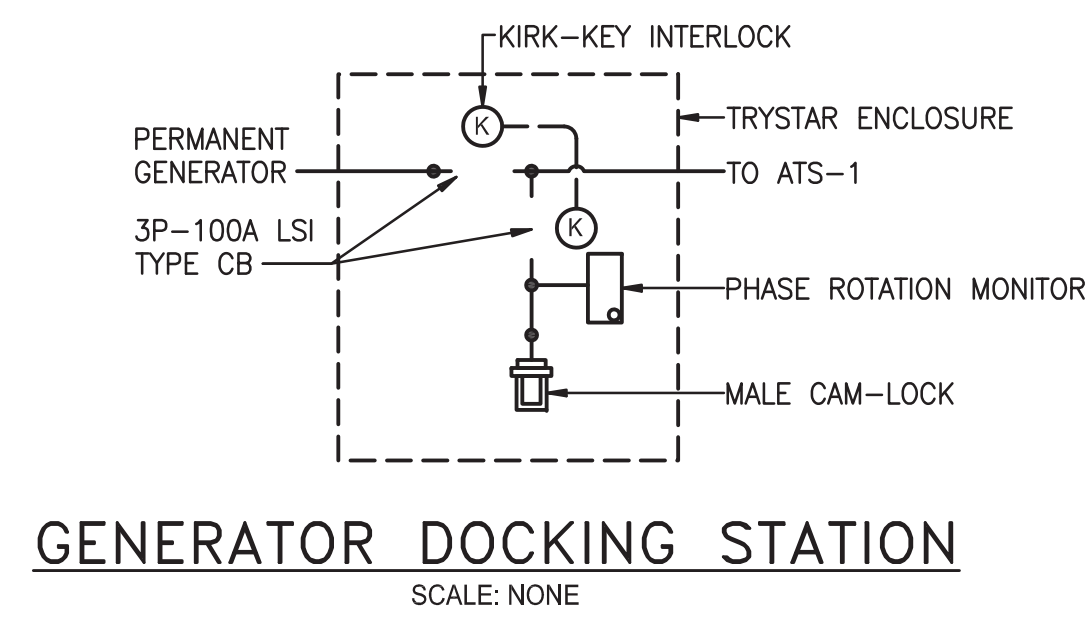
PROFESSIONAL CERTIFICATION: I AM A PROFESSIONAL ENGINEER IN THE STATE OF MARYLAND. MY LICENSE NO. IS 151896. MY EXPIRATION DATE IS 12-13-2023.

ALBAN ENGINEERING, INC.
303 INTERSTATE 40 CIRCLE
HUNT VALLEY, MD 21080
www.albanengineering.com

**PARTIAL FLOOR PLAN - AREA A
- DEMOLITION**
ROSA PARKS MS - EMERGENCY UPGRADE
OLNEY, MD 20832

PN# 22080
PROJECT MANAGER DRH
DESIGNER BSF

ED101
BID CHECK SET
05-23-2023



- GENERAL NOTES:**
- REFER TO PANEL SCHEDULES FOR ADDITIONAL INFORMATION.
 - CONTRACTOR SHALL REDUCE FEEDER SIZE (IF REQUIRED) WITHIN 5'-0" OF EQUIPMENT TO ACCOMMODATE LUG SIZES.
 - ALL PANELBOARDS WITH 84-POLES OR LESS SHALL BE IN A SINGLE INTERIOR BACKBOX.
 - VERIFY APPROPRIATE BREAKERS ASSOCIATED WITH MECHANICAL EQUIPMENT TO BE ON EMERGENCY POWER ARE BEING RELOCATED TO EMERGENCY PANELS.
 - RE-CIRCUIT ALL RESTROOM LIGHTING FIXTURES AND CONTROLS TO BE SERVED FROM ASSOCIATED E1 PANEL. MODIFY/EXTEND CIRCUIT AS REQUIRED.
 - RE-CIRCUIT ALL FIRE ALARM BRANCH CIRCUITS ON NORMAL PANELS TO BE SERVED FROM ASSOCIATED E1 PANEL. MODIFY/EXTEND CIRCUIT AS REQUIRED.

- DRAWING NOTES:**
- MODIFY/EXTEND CONCRETE PAD TO ACCOMMODATE NEW GENERATOR.
 - MOUNT TO SUIT DATA RACKS.
 - RE-CIRCUIT ALL LIGHTING FIXTURES AND CONTROLS IN THIS ROOM TO BE SERVED FROM ASSOCIATED E1 PANEL. MODIFY/EXTEND CIRCUIT AS REQUIRED.
 - WALK-IN COOLER.
 - WALK-IN FREEZER.

NO.	DATE	REVISIONS	DESCRIPTION

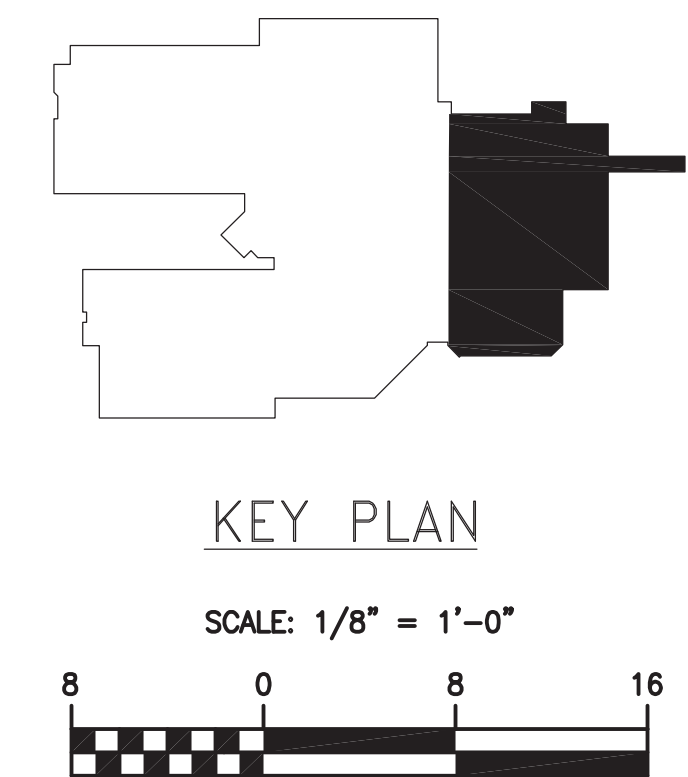
THIS DRAWING AND THE DESIGN THEREOF ARE THE PROPERTY OF ALBAN ENGINEERING, INC. AND SHALL NOT BE ALTERED OR REUSED IN WHOLE OR IN PART WITHOUT THE WRITTEN PERMISSION OF ALBAN ENGINEERING, INC.
Copyright © 2023

PROFESSIONAL CERTIFICATION: I, ALAN J. ALBAN, A PROFESSIONAL ELECTRICAL ENGINEER, HAVE PREPARED OR APPROVED BY ME, AND THAT I AM A DULY LICENSED PROFESSIONAL ENGINEER UNDER THE LAWS OF MARYLAND.
LICENSE NO. 51896
EXPIRATION DATE: 12-13-2023

ALBAN ENGINEERING, INC.
303 INTERNATIONAL CIRCLE
HUNT VALLEY, MD 21080
www.albanengineering.com
410.842.6411

PARTIAL FLOOR PLAN - AREA A
ROSA PARKS MS - EMERGENCY UPGRADE
OLNEY, MD 20832

PN#	22080
PROJECT MANAGER	DRH
DESIGNER	BSF



E101
BID CHECK SET
05-23-2023

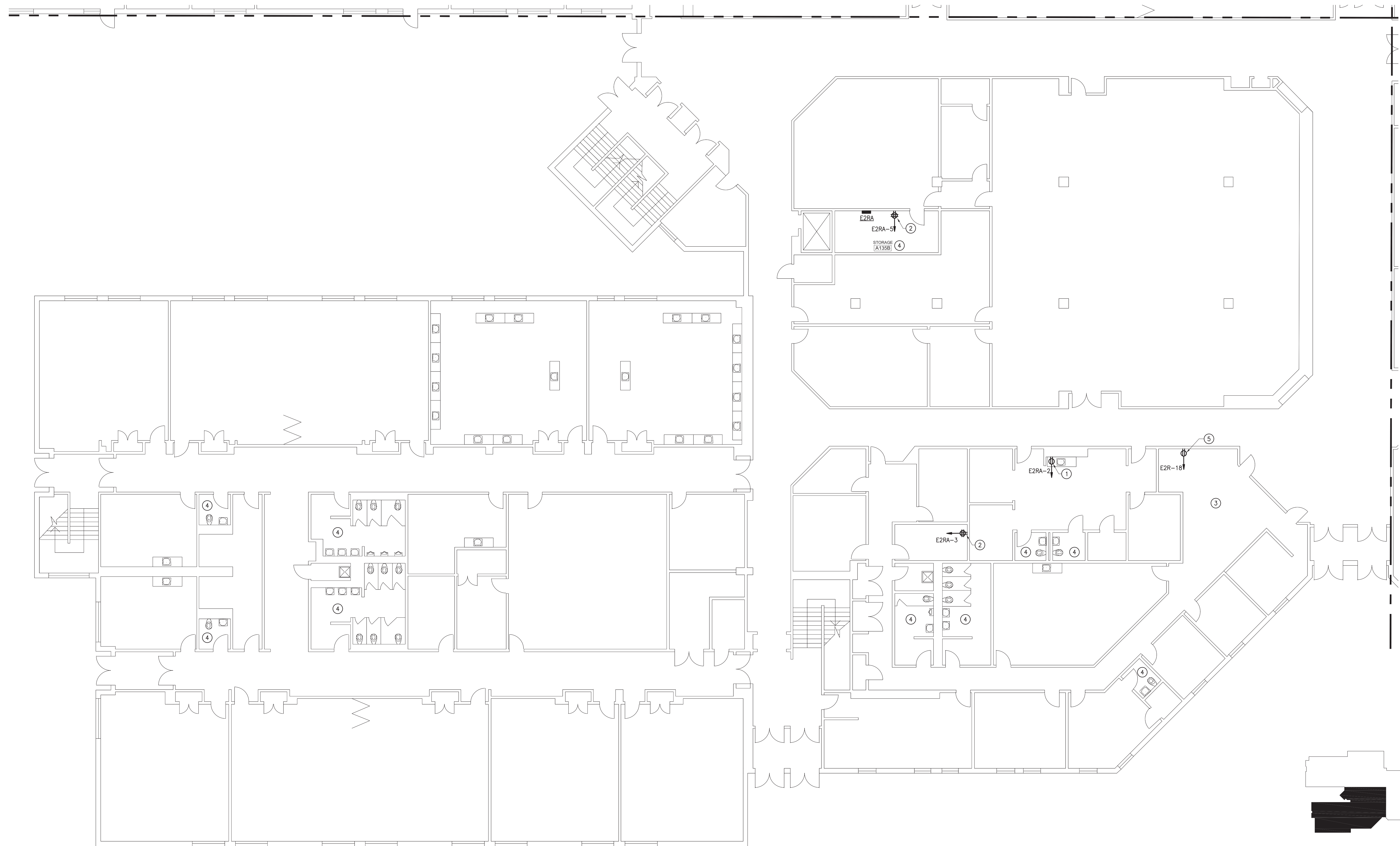
GENERAL NOTES:

1. REFER TO PANEL SCHEDULES FOR ADDITIONAL INFORMATION.
2. CONTRACTOR SHALL REDUCE FEEDER SIZE (IF REQUIRED) WITHIN 5'-0" OF EQUIPMENT TO ACCOMMODATE LUG SIZES.
3. ALL PANELBOARDS WITH 84-POLES OR LESS SHALL BE IN A SINGLE INTERIOR BACKBOX.
4. VERIFY APPROPRIATE BREAKERS ASSOCIATED WITH MECHANICAL EQUIPMENT TO BE ON EMERGENCY POWER ARE BEING RELOCATED TO EMERGENCY PANELS.
5. RECIRCULATE ALL RESTROOM LIGHTING FIXTURES AND CONTROLS TO BE SERVED FROM ASSOCIATED E1 PANEL. MODIFY/EXTEND CIRCUIT AS REQUIRED.
6. RECIRCULATE ALL FIRE ALARM BRANCH CIRCUITS ON NORMAL PANELS TO BE SERVED FROM ASSOCIATED E1 PANEL. MODIFY/EXTEND CIRCUIT AS REQUIRED.

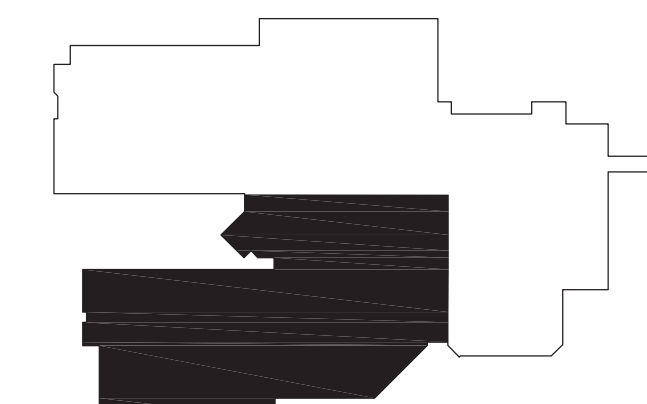
DRAWING NOTES:

- ① MOUNT TO SUIT HEALTH REFRIGERATOR.
- ② MOUNT TO SUIT DATA RACK.
- ③ IF NO EXISTING FIXTURE IS ON EMERGENCY POWER IN THE ADMIN RECEPTION, CIRCUIT (1) FIXTURE TO NEAREST EMERGENCY CIRCUIT WITH (2) #12 + #12GW - 3/4".
- ④ RECIRCULATE ALL LIGHTING FIXTURES AND CONTROLS IN THIS ROOM TO BE SERVED FROM ASSOCIATED E1 PANEL. MODIFY/EXTEND CIRCUIT AS REQUIRED.
- ⑤ MOUNT TO SUIT EXISTING PA SYSTEM. COORDINATE EXACT LOCATION IN FIELD.

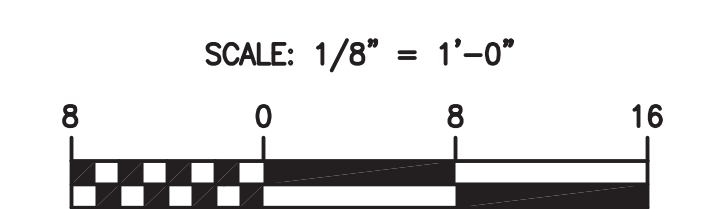
MATCHLINE - AREA C



PARTIAL FLOOR PLAN - AREA B
SCALE: 1/8" = 1'-0"



KEY PLAN



MATCHLINE - AREA A

NO.	DATE	REVISIONS	DESCRIPTION

THIS DRAWING AND THE DESIGN INFORMATION CONTAINED HEREIN ARE THE PROPERTY OF ALBAN ENGINEERING, INC. AND SHALL NOT BE ALTERED OR REUSED IN WHOLE OR IN PART WITHOUT THE WRITTEN PERMISSION OF ALBAN ENGINEERING, INC.
Copyright © 2023

PROFESSIONAL CERTIFICATION: I, ROSA PARKS MS, A PROFESSIONAL ENGINEER UNDER THE LAWS OF MARYLAND, LICENSE NO. 51896, EXPIRATION DATE: 12-13-2023

ALBAN ENGINEERING, INC
303 INTERNATIONAL CIRCLE
HUNT VALLEY, MD 21080
www.albanengineering.com 410.842.6411

PARTIAL FLOOR PLAN - AREA B
ROSA PARKS MS - EMERGENCY UPGRADE
OLNEY, MD 20832

PN#	22080
PROJECT MANAGER	DRH
DESIGNER	BSF

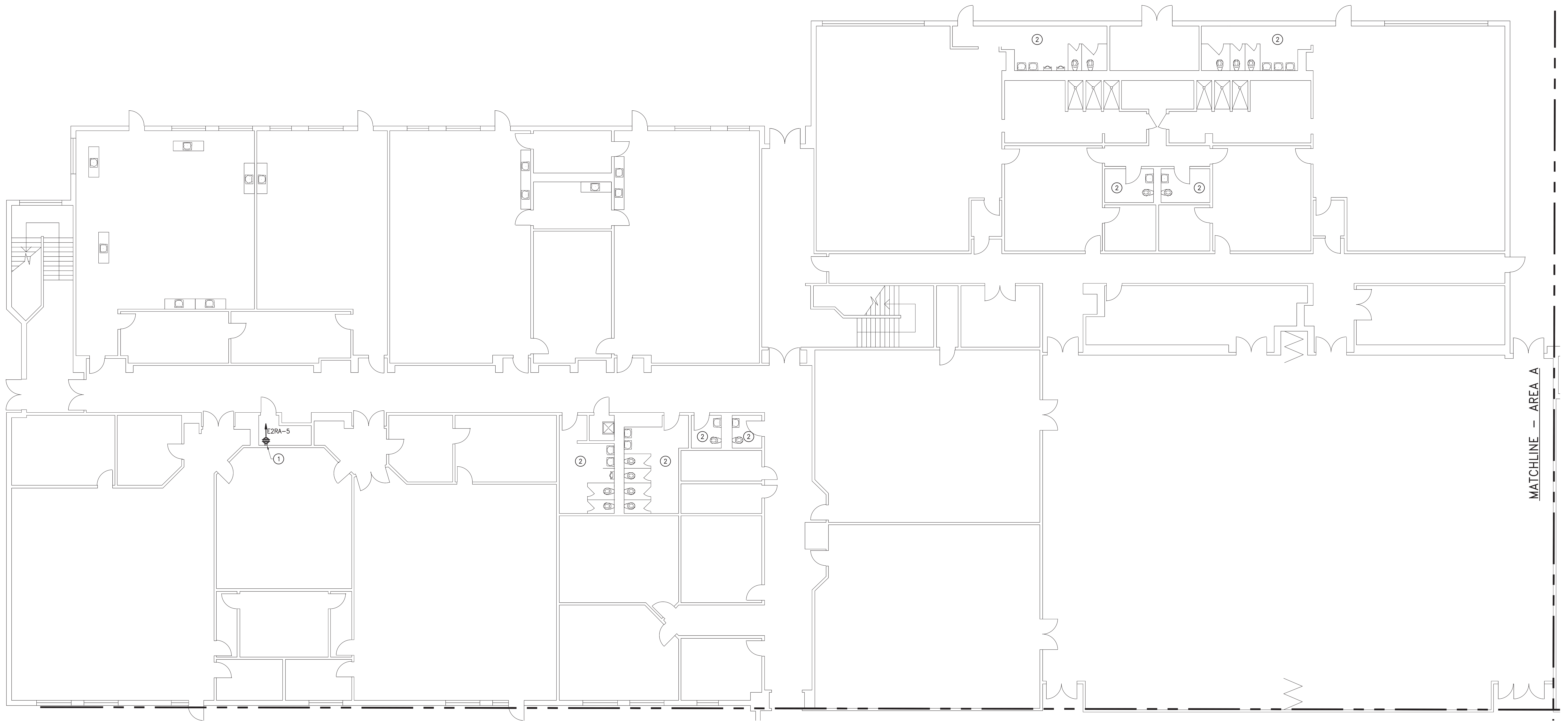
E102

GENERAL NOTES:

- REFER TO PANEL SCHEDULES FOR ADDITIONAL INFORMATION.
- CONTRACTOR SHALL REDUCE FEEDER SIZE (IF REQUIRED) WITHIN 5'-0" OF EQUIPMENT TO ACCOMMODATE LUG SIZES.
- ALL PANELBOARDS WITH 84-POLES OR LESS SHALL BE IN A SINGLE INTERIOR BACKBOX.
- VERIFY APPROPRIATE BREAKERS ASSOCIATED WITH MECHANICAL EQUIPMENT TO BE ON EMERGENCY POWER ARE BEING RELOCATED TO EMERGENCY PANELS.
- RE-CIRCUIT ALL RESTROOM LIGHTING FIXTURES AND CONTROLS TO BE SERVED FROM ASSOCIATED E1 PANEL. MODIFY/EXTEND CIRCUIT AS REQUIRED.
- RE-CIRCUIT ALL FIRE ALARM BRANCH CIRCUITS ON NORMAL PANELS TO BE SERVED FROM ASSOCIATED E1 PANEL. MODIFY/EXTEND CIRCUIT AS REQUIRED.

DRAWING NOTES:

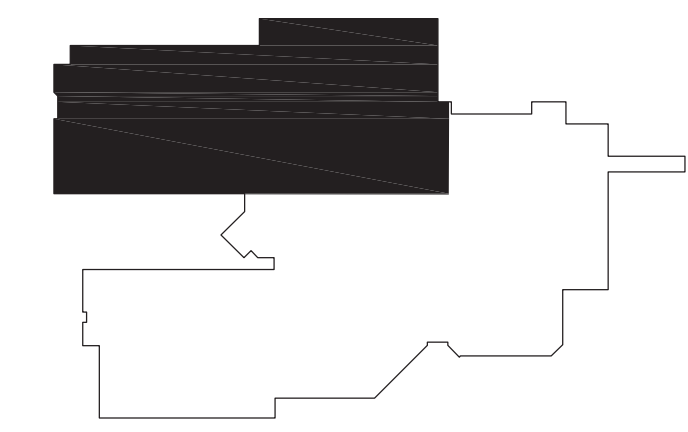
- MOUNT TO SUIT DATA RACK.
- RE-CIRCUIT ALL LIGHTING FIXTURES AND CONTROLS IN THIS ROOM TO BE SERVED FROM ASSOCIATED E1 PANEL. MODIFY/EXTEND CIRCUIT AS REQUIRED.



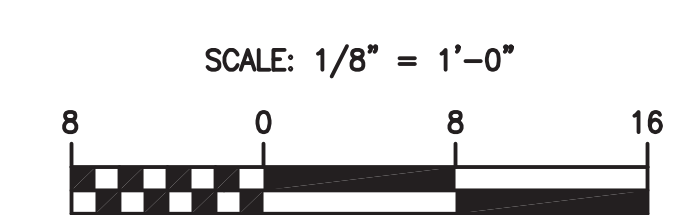
MATCHLINE - AREA B

MATCHLINE - AREA A

PARTIAL FLOOR PLAN - AREA C
SCALE: 1/8" = 1'-0"



KEY PLAN



NO.	DATE	REVISIONS	DESCRIPTION

THIS DRAWING AND THE DESIGN INFORMATION CONTAINED HEREIN ARE THE PROPERTY OF ALBAN ENGINEERING, INC. AND SHALL NOT BE ALTERED OR REUSED IN WHOLE OR IN PART WITHOUT THE WRITTEN PERMISSION OF ALBAN ENGINEERING, INC.
Copyright © 2023

PROFESSIONAL CERTIFICATION: I, ROSA PARYS MS, A PROFESSIONAL ENGINEER UNDER THE LAWS OF MARYLAND, LICENSE NO. 51896, EXPIRATION DATE: 12-13-2023

ALBAN ENGINEERING, INC
303 INTERSTATE 405 CIRCLE
HUNT VALLEY, MD 21080
www.albanengineering.com 410.842.6411

PARTIAL FLOOR PLAN - AREA C
ROSA PARYS MS - EMERGENCY UPGRADE
OLNEY, MD 20832

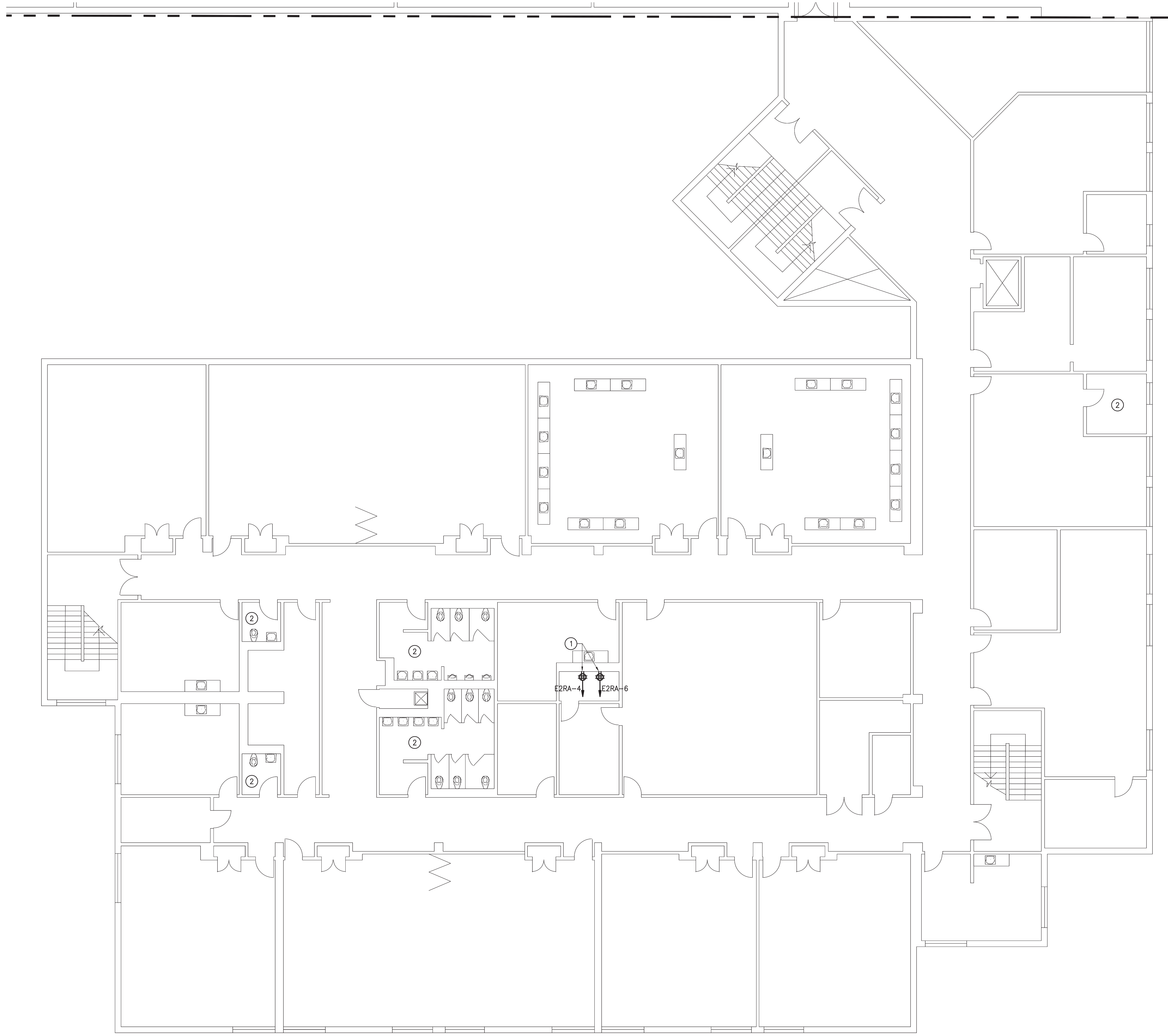
PN#	22080
PROJECT MANAGER	DRH
DESIGNER	BSF

E103

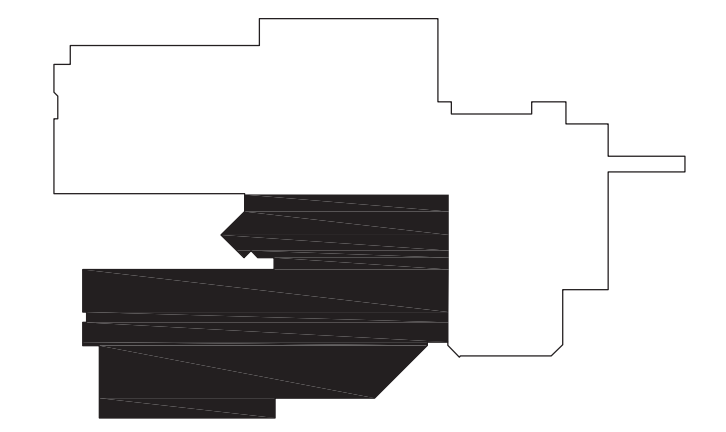
BID CHECK SET
05-23-2023



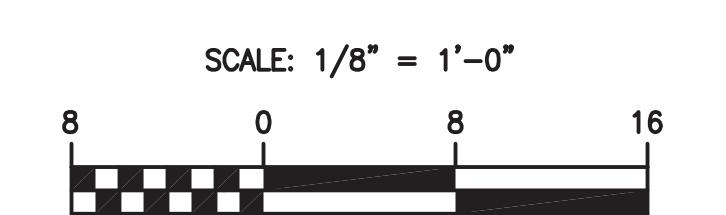
MATCHLINE - AREA C



PARTIAL 2ND FLOOR PLAN - AREA B
SCALE: 1/8" = 1'-0"



KEY PLAN



GENERAL NOTES:

- REFER TO PANEL SCHEDULES FOR ADDITIONAL INFORMATION.
- CONTRACTOR SHALL REDUCE FEEDER SIZE (IF REQUIRED) WITHIN 5'-0" OF EQUIPMENT TO ACCOMMODATE LUG SIZES.
- ALL PANELBOARDS WITH 84-POLES OR LESS SHALL BE IN A SINGLE INTERIOR BACKBOX.
- VERIFY APPROPRIATE BREAKERS ASSOCIATED WITH MECHANICAL EQUIPMENT TO BE ON EMERGENCY POWER ARE BEING RELOCATED TO EMERGENCY PANELS.
- RE-CIRCUIT ALL RESTROOM LIGHTING FIXTURES AND CONTROLS TO BE SERVED FROM ASSOCIATED E1 PANEL. MODIFY/EXTEND CIRCUIT AS REQUIRED.
- RE-CIRCUIT ALL FIRE ALARM BRANCH CIRCUITS ON NORMAL PANELS TO BE SERVED FROM ASSOCIATED E1 PANEL. MODIFY/EXTEND CIRCUIT AS REQUIRED.

DRAWING NOTES:

- MOUNT TO SUIT DATA RACKS.
- RE-CIRCUIT ALL LIGHTING FIXTURES AND CONTROLS IN THIS ROOM TO BE SERVED FROM ASSOCIATED E1 PANEL. MODIFY/EXTEND CIRCUIT AS REQUIRED.

NO.	DATE	REVISIONS	DESCRIPTION

THIS DRAWING AND THE DESIGN INFORMATION CONTAINED HEREIN ARE THE PROPERTY OF ALBAN ENGINEERING, INC. AND SHALL NOT BE ALTERED OR REUSED IN WHOLE OR IN PART WITHOUT THE WRITTEN PERMISSION OF ALBAN ENGINEERING, INC.
Copyright © 2023

PROFESSIONAL CERTIFICATION: I AM A PROFESSIONAL ENGINEER IN THE STATE OF MARYLAND. MY DOCUMENTS WERE PREPARED OR APPROVED BY ME, AND THAT I AM A DULY LICENSED PROFESSIONAL ENGINEER UNDER THE LAWS OF MARYLAND.
LICENSE NO. 51896
EXPIRATION DATE: 12-13-2023

ALBAN
ENGINEERING, INC.
303 INTERSTATE 405 CIRCLE
HUNTSVILLE, MD 21080
www.albanengineering.com 410.842.6411

PARTIAL 2ND FLOOR PLAN - AREA B
ROSA PARKS MS - EMERGENCY UPGRADE
OLNEY, MD 20832

PN#	22080
PROJECT MANAGER	DRH
DESIGNER	BSF

E104

GENERAL NOTES:

- REFER TO PANEL SCHEDULES FOR ADDITIONAL INFORMATION.
- CONTRACTOR SHALL REDUCE FEEDER SIZE (IF REQUIRED) WITHIN 5'-0" OF EQUIPMENT TO ACCOMMODATE LUG SIZES.
- ALL PANELBOARDS WITH 84-POLES OR LESS SHALL BE IN A SINGLE INTERIOR BACKBOX.
- VERIFY APPROPRIATE BREAKERS ASSOCIATED WITH MECHANICAL EQUIPMENT TO BE ON EMERGENCY POWER ARE BEING RELOCATED TO EMERGENCY PANELS.
- RE-CIRCUIT ALL RESTROOM LIGHTING FIXTURES AND CONTROLS TO BE SERVED FROM ASSOCIATED E1 PANEL. MODIFY/EXTEND CIRCUIT AS REQUIRED.
- RE-CIRCUIT ALL FIRE ALARM BRANCH CIRCUITS ON NORMAL PANELS TO BE SERVED FROM ASSOCIATED E1 PANEL. MODIFY/EXTEND CIRCUIT AS REQUIRED.

DRAWING NOTES:

- MOUNT TO SUIT DATA RACKS.
- RE-CIRCUIT ALL LIGHTING FIXTURES AND CONTROLS IN THIS ROOM TO BE SERVED FROM ASSOCIATED E1 PANEL. MODIFY/EXTEND CIRCUIT AS REQUIRED.

NO.	DATE	REVISIONS	DESCRIPTION

THIS DRAWING AND THE DESIGN INFORMATION CONTAINED HEREIN ARE THE PROPERTY OF ALBAN ENGINEERING, INC. AND SHALL NOT BE ALTERED OR REUSED IN WHOLE OR IN PART WITHOUT THE WRITTEN PERMISSION OF ALBAN ENGINEERING, INC.
Copyright © 2023

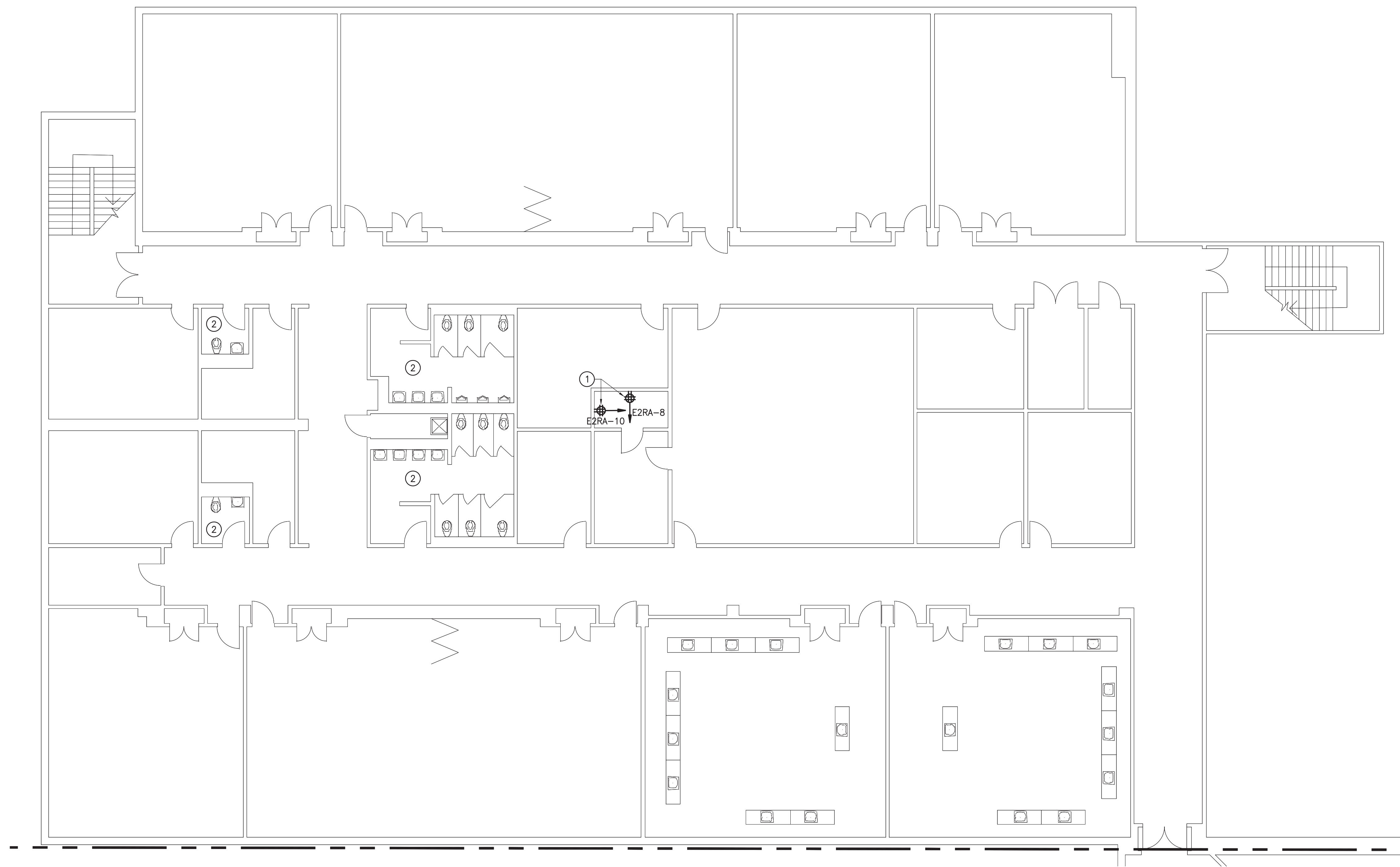
PROFESSIONAL CERTIFICATION: I AM A PROFESSIONAL ELECTRICAL ENGINEER AND THESE DOCUMENTS WERE PREPARED OR APPROVED BY ME, AND THAT I AM A DULY LICENSED PROFESSIONAL ENGINEER UNDER THE LAWS OF MARYLAND.
LICENSE NO. 51896
EXPIRATION DATE: 12-13-2023

ALBAN ENGINEERING, INC.
303 INTERNATIONAL CIRCLE
HUNT VALLEY, MD 21080
www.albanengineering.com 410.842.6411

PARTIAL 2ND FLOOR PLAN - AREA C
ROSA PARKS MS - EMERGENCY UPGRADE
OLNEY, MD 20832

PN#	22080
PROJECT MANAGER	DRH
DESIGNER	BSF

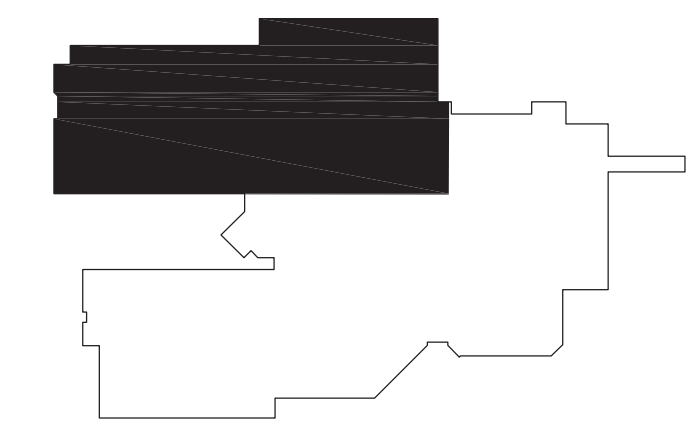
E105
BID CHECK SET
05-23-2023



MATCHLINE - AREA B

PARTIAL 2ND FLOOR PLAN - AREA C

SCALE: 1/8" = 1'-0"



KEY PLAN

SCALE: 1/8" = 1'-0"



THIS DRAWING AND THE DESIGN INFORMATION CONTAINED HEREIN ARE THE PROPERTY OF ALBAN ENGINEERING, INC. AND SHALL NOT BE ALTERED OR REUSED IN WHOLE OR IN PART WITHOUT THE WRITTEN PERMISSION OF ALBAN ENGINEERING, INC.
Copyright © 2023

PROFESSIONAL CERTIFICATION: I AM A PROFESSIONAL ELECTRICAL ENGINEER AND THESE DOCUMENTS WERE PREPARED OR APPROVED BY ME, AND THAT I AM A DULY LICENSED PROFESSIONAL ENGINEER UNDER THE LAWS OF MARYLAND.
LICENSE NO. 51896
EXPIRATION DATE: 12-13-2023

ALBAN ENGINEERING, INC.
303 INTERNATIONAL CIRCLE
HUNT VALLEY, MD 21080
www.albanengineering.com 410.842.6411

PARTIAL 2ND FLOOR PLAN - AREA C
ROSA PARKS MS - EMERGENCY UPGRADE
OLNEY, MD 20832

PN#	22080
PROJECT MANAGER	DRH
DESIGNER	BSF

E105
BID CHECK SET
05-23-2023



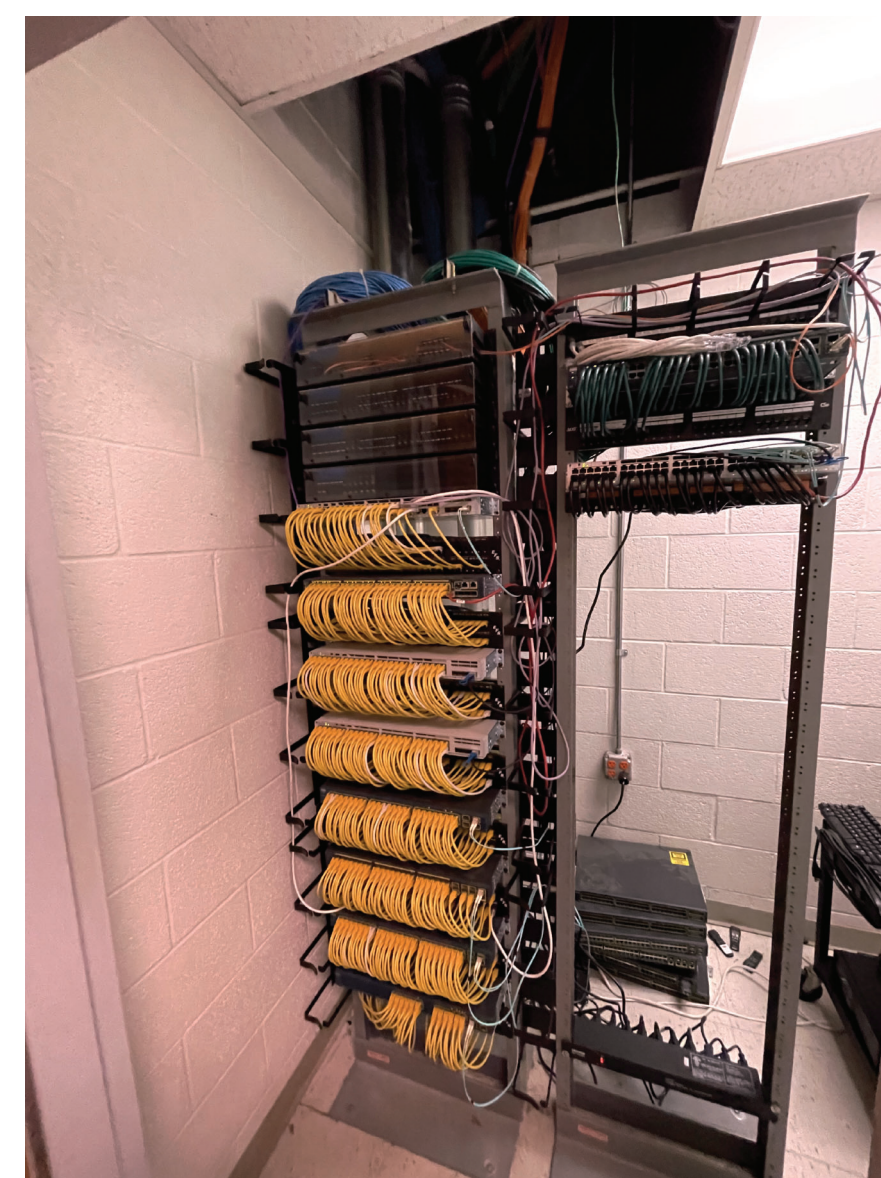
1 GENERATOR & UTILITY TRANSFORMER



2 NEW EMERGENCY PANEL LOCATION



MAIN SWITCHBOARD



3 MAIN BUILDING IT ROOM

MSB										
MOUNTING: FREE STANDING			A.I.C. RATING: 65,000			LOCATION: MAIN ELEC RM				
VOLTAGE: 480/277V, 3ø, 4 WIRE			4000 AMPERE MAIN BUS			1600 AMPERE MAIN CIRCUIT BREAKER				
DISTRIBUTION SECTION										
FDR NO	SERVES	CIRCUIT BREAKER			WIRING			REMARKS	CONN KVA	
		P	FRAME	TRIP	SETS	NO	SIZE			GND
1	MCC	3	400							
2	SPACE	3								
3	SPACE	3								
4	SPACE	3								
5	PANEL MA	3	225							
6	PANEL B	3	175							
7	ELEVATOR	3	80							
8	SPACE	3								
9	SPACE	3								
10	PANEL D	3	300							
11	PANEL C	3	300							
12	PANEL MC	3	350							
13	EXISTING CIRC	3	400							
14	SPACE	1								
15	SPACE	1								
16	SPACE	3								
17	SPACE	3								
18	SPACE	3								
19	PANEL KH	3	175							
20	PANEL E1L (VIA ATS-1)	3	100	100	1	4	3	8	1-1/2	9.9
21	PANEL A	3	150							
22	PANEL MD	3	175							
23	EXISTING CIRC (OFF)	3	225							
24	EXISTING CIRC (OFF)	3	225							
25	EXISTING CIRC (OFF)	3	225							
26	PANEL E2L (VIA ATS-2)	3	150	150	1	4	1/0	6	1-1/2	111.0
27	SPACE	3								
28	SPACE	3								
29	SPACE	3								
30	CHILLER C-1	3	400							
31	PANEL AIM	3	800							
32	CHILLER C-2	3	400							
33	MAIN SOLAR SYSTEM AC DISCONNECT	3	400							
PROVIDE GROUND FAULT PROTECTION AT MAIN CIRCUIT BREAKER									TOTAL CONNECTED LOAD:	120.9 KVA

DRY TYPE TRANSFORMER SCHEDULE												
XFMR	KVA	PRIMARY VOLTAGE		CB	PRIMARY WIRING	SECONDARY WIRING	SECONDARY VOLTAGE	CB	NEUTRAL/CASE GND	REMARKS	MOUNTING DISCRPTION	
TE1R	15	480	3	30	3#10-#10GW-3/4"C	4#6-#10GW-1 1/4"C	208/120	3	60	#8		SUSPENDED
TE2R	45	480	3	90	3#3-#8GW-1 1/4"C	4#10-#8GW-2"C	208/120	3	150	#6		FLOOR

FUSED PANEL E1L														
VOLTAGE: 480/277V, 3ø, 4W					MOUNTING: SURFACE									
100 AMPERE BUS					LOCATION: ELECTRICAL ROOM									
100 A MCB					42,000 A.I.C.									
CONN KVA	CKT	DESCRIPTION	BREAKER P	AMPS	CIRCUIT WIRING NO	SIZE	GND	C	CONN KVA					
1.8	1	E. LIGHTING*	1	20	2	12	12	3/4	1.5					
1.0	3	E. LIGHTING*	1	20	2	12	12	3/4	4					
	5								6					
	7								8					
	9								10					
	11								12					
	13								14					
	15								16					
	17								18					
	19								20					
	21								22					
	23								24					
	25								26					
	27								28					
	29								30					
	31								32					
	33								34					
	35								36					
	37								38					
2.1	37	PANEL E1R (VIA XFMR TE1R)	3	30					0.1					
2.1	38								40	0.1				
1.1	41								42	0.1				
TOTAL CONNECTED LOAD			9.9 KVA			KVA PER PHASE:			A	5.5	B	3.2	C	1.2

PANEL E2L														
VOLTAGE: 480/277V, 3ø, 4W					MOUNTING: SURFACE									
150 AMPERE BUS					LOCATION: ELECTRICAL ROOM									
150 A MCB					42,000 A.I.C.									
CONN KVA	CKT	DESCRIPTION	BREAKER P	AMPS	CIRCUIT WIRING NO	SIZE	GND	C	CONN KVA					
3.6	1	P-1**	3	25	3	10	10	3/4	2	0.0				
3.6	3								4	0.0				
3.6	5								6	0.0				
7.4	7								8	0.0				
7.4	9	P-3**	3	60	3	6	10	1	10	0.0				
7.4	11								12	0.0				
7.4	13								14	0.0				
7.4	15	P-5**	3	60	3	6	10	1	16	0.0				
7.4	17								18	0.0				
4.0	19								20	2.1				
4.0	21	BOILER-1,2	3	20	3	12	12	3/4	22	2.1				
4.0	23								24	2.1				
	25								26	2.1				
	27								28	2.1				
	30								31	2.1				
	31								32	2.1				
	33								34	2.1				
	35								36	2.1				
	37								38	2.1				
11.5	37	PANEL E2R (VIA XFMR TE2R)	3	90					40	0.1				
9.6	38								40	0.1				
9.6	41								42	0.1				
TOTAL CONNECTED LOAD			111.0 KVA			KVA PER PHASE:			A	38.2	B	36.3	C	36.5

FUSED PANEL E1R														
VOLTAGE: 208/120V, 3ø, 4W					MOUNTING: SURFACE									
100 AMPERE BUS					LOCATION: ELECTRICAL ROOM									
60 A MCB					42,000 A.I.C.									
CONN KVA	CKT	DESCRIPTION	BREAKER P	AMPS	CIRCUIT WIRING NO	SIZE	GND	C	CONN KVA					
1.0	1	HOOD FIRE SUPPRESS**	1	20	2	12	12	3/4	2					
1.0	3	E. LTG - CAFE**	1	20	2	12	12	3/4	4					
1.0	5	FA PANEL**	1	20	2	12	12	3/4	6					
1.0	7	LTG - ADMIN	1	20	2	12	12	3/4	8					
1.0	9	LTG - ADMIN	1	20	2	12	12	3/4	10					
	11								12					
	13								14					
	15								16					
	17								18					
	19								20					
	21								22					
	23								24					
	25								26					
	27								28					
	29								30					
	31								32					
	33								34					
	35								36					
	37								38					
	39								40	0.1				
	41								40	0.1				
	42								42	0.1				
TOTAL CONNECTED LOAD			5.3 KVA			KVA PER PHASE:			A	2.1	B	2.1	C	1.1

PANEL E2R														
VOLTAGE: 208/120V, 3ø, 4W					MOUNTING: SURFACE									
225 AMPERE BUS					LOCATION: ELECTRICAL ROOM									
150 A MCB					42,000 A.I.C.									
CONN KVA	CKT	DESCRIPTION	BREAKER P	AMPS	CIRCUIT WIRING NO	SIZE	GND	C	CONN KVA					
1.2	1	QUAD - IT ROOM	1	20	2	12	12	3/4	2	1.0				
0.6	3	HWG-1**	1	20	2	12	12	3/4	4	1.0				
0.6	5	HWG-2**	1	20	2	12	12	3/4	6	1.0				
0.6	7	HOT WATER PUMP**	1	20	2	12	12	3/4	8	1.0				
1.0	9	FREEZER EVAP**	2	30	2	10	10	3/4	10	1.0				
1.0	11								12	1.0				
1.0	13	COOLER EVAP**	2	15	2	12	12	3/4	14	0.8				
1.0	15								16	0.8				
1.7	17	BOILER PUMP	1	20	2	12	12	3/4	18	1.0				
1.7	19	BOILER PUMP	1	20	2	12	12	3/4	20	1.0				
	21								22					
	23								24					
	25								26					
	27								28					
	29								30	0.5				
	31								32	0.5				
	33	STIP/BATTERY HEATER	1	20	2	12	12	3/4	34	0.5				
	35	GEN BATTERY CHARGER	1	20	2	12	12	3/4	36	0.5				
3.4	37								38	0.1				
3.6	39	PANEL E2RA	3	50	4	6	10	1	40	0.1				
2.4	41								42	0.1				
TOTAL CONNECTED LOAD			30.9 KVA			KVA PER PHASE:			A	11.5	B	9.6	C	9.8

PANEL E2RA														
VOLTAGE: 208/120V, 3ø, 4W					MOUNTING: SURFACE									
100 AMPERE BUS					LOCATION: ELECTRICAL ROOM									
50 A MCB					42,000 A.I.C.									
CONN KVA	CKT	DESCRIPTION	BREAKER P	AMPS	CIRCUIT WIRING NO	SIZE	GND	C	CONN KVA					
1.2	1	QUAD - IT AREA C	1	20	2	12	12	3/4	2	1.0				
1.2	3	QUAD - IT ADMIN	1	20	2	12	12	3/4	4	1.2				
1.2	5	QUAD - IT ROOM	1	20	2	12	12	3/4	6	1.2				
	7								8	1.2				
	9								10	1.2				
	11								12	1.2				
	13								14					
	15								16					
	17								18					
	19								20					
	21								22	0.1				
	23								24	0.1				
TOTAL CONNECTED LOAD			9.4 KVA			KVA PER PHASE:			A	3.4	B	3.6	C	2.4

REVISIONS

NO.	DATE	DESCRIPTION

THIS DRAWING AND THE DESIGN INFORMATION CONTAINED HEREIN ARE THE PROPERTY OF ALBAN ENGINEERING, INC. AND SHALL NOT BE ALTERED OR REUSED IN WHOLE OR IN PART WITHOUT THE WRITTEN PERMISSION OF ALBAN ENGINEERING, INC. Copyright © 2023

PROFESSIONAL CERTIFICATION: I, ROSA PARRIS MS, A PROFESSIONAL ENGINEER UNDER THE LAWS OF MARYLAND, LICENSE NO. 51986, EXPIRATION DATE: 12-13-2023.

ALBAN ENGINEERING, INC.
303 INTERNATIONAL CIRCLE
HUNT VALLEY, MD 21080
410.842.6411
www.albanengineering.com

PANEL SCHEDULES AND PICTURES

ROSA PARRIS MS - EMERGENCY UPGRADE
OLNEY, MD 20832

PN# 22080
PROJECT MANAGER DRH
DESIGNER BSF

E601
BID SET
06-09-2023

PLUMBING GENERAL NOTES:

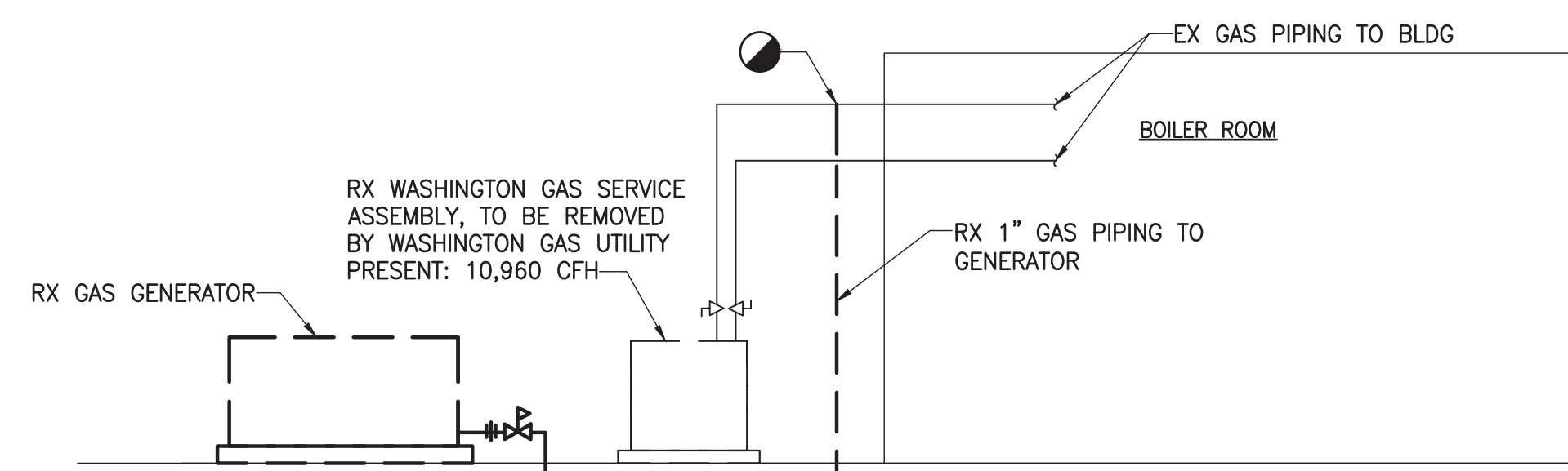
- A. COORDINATE NEW WORK BETWEEN ALL DISCIPLINES.
- B. REFER TO SECTIONS ON ARCHITECTURAL AND MECHANICAL DRAWINGS FOR PIPE ROUTING THROUGH THE FACILITY.
- C. COORDINATE PLUMBING PIPING ENCLOSURES WITH ARCHITECTURAL DRAWINGS PRIOR TO SETTING PIPING BELOW SLABS.
- D. FIELD VERIFY PIPING MATERIALS AND SIZES PRIOR TO CONNECTION THERETO.
- E. INSTALL PIPING TO ALLOW ACCESS TO VALVES.
- J. WHERE HOT AND COLD WATER PIPING DROPS INTO PIPE CHASE, THE SIZE SHOWN FOR THE PIPE DROPS SHALL BE USED TO THE LAST FIXTURE.
- K. ITEMS SUCH AS ACCESS DOORS, RISE AND DROPS IN PIPING, ETC., ARE INDICATED ON THE DRAWINGS FOR CLARITY OR A SPECIFIC LOCATION REQUIREMENT AND SHALL NOT BE INTERPRETED AS THE EXTENT OF THE REQUIREMENTS FOR THESE ITEMS. THE CONTRACTOR IS RESPONSIBLE FOR THESE ITEMS AS REQUIRED ELSEWHERE IN THE CONTRACT DOCUMENTS.
- L. FIXTURES SUBJECT TO INTERMITTENT OR CONTINUOUS PRESSURE BACK-SIPHONAGE SHALL BE PROVIDED WITH A BACKFLOW PREVENTION DEVICE.
- M. COORDINATE SETTING OF KITCHEN FLOOR SINKS AND FLOOR DRAINS WITH LOCAL PLUMBING INSPECTOR.
- N. ALL PIPING NOT INDICATED IN CHASES SHALL BE LOCATED ABOVE CEILING AS HIGH AS POSSIBLE. COORDINATE ROUTING OF PIPING WITH OTHER DISCIPLINES.
- O. REFER TO ALL ARCHITECTURAL DRAWINGS FOR RATED WALL ASSEMBLY LOCATIONS.

MISCELLANEOUS

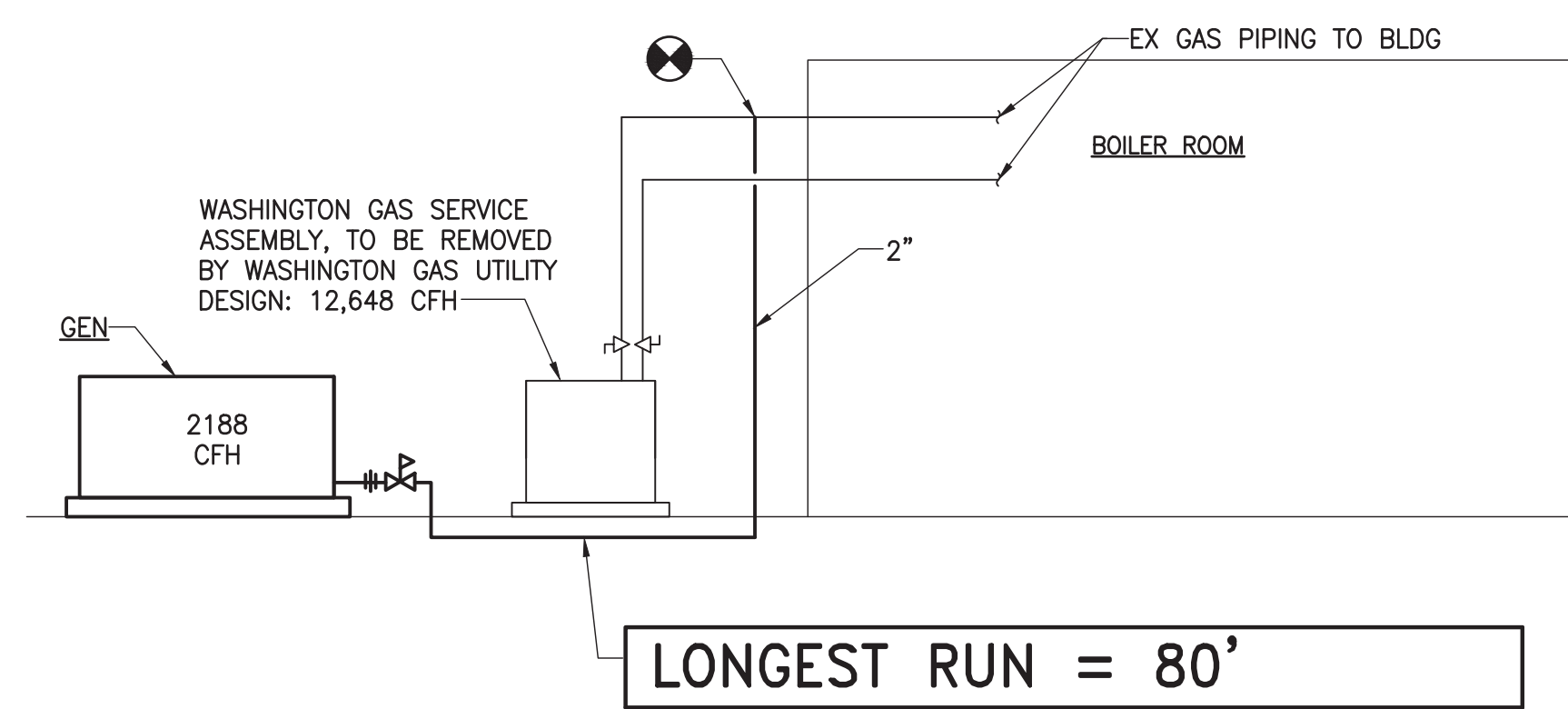
- ① REFERENCE TO DRAWING NOTE
- #/P#.# DETAIL REFERENCE: DETAIL NUMBER/DRAWING NUMBER
- ITEMS SHOWN DASHED/HEAVY ARE TO BE REMOVED
- ITEMS SHOWN SOLID/LIGHT ARE EXISTING TO REMAIN
- ITEMS SHOWN DASHED-DOTTED/LIGHT ARE TO OCCUR IN FUTURE PHASES

DEMOLITION NOTES:

- 1. DEMOLITION DRAWINGS ARE DIAGRAMMATIC IN NATURE; NO ATTEMPT HAS BEEN MADE TO SHOW ALL EXISTING ELECTRICAL WORK IN AREAS INDICATED TO BE RENOVATED. ALL EXISTING ELECTRICAL WORK IS TO BE REMOVED UNLESS OTHERWISE NOTED. WHEN AN ITEM TO BE REMOVED, REMOVE ALL ASSOCIATED ELECTRICAL WORK BACK TO POINT-OF-SOURCE.
- 2. WHERE WORK PASSES THROUGH THE RENOVATION AREA TO SERVE OTHER PORTIONS OF THE BUILDING, OR WORK IN THE RENOVATION AREA INDICATED TO BE REMAIN, IT SHALL BE SUITABLY RELOCATED AND THE SYSTEMS RESTORED TO NORMAL. COORDINATE ANY OUTAGES WITH OWNER 7 DAYS IN ADVANCE.
- 3. WORK INDICATED TO REMAIN SHALL BE SUITABLY PROTECTED AGAINST DAMAGE.
- 4. TURN OVER ALL CIRCUIT BREAKERS, LIGHTING AND APPLIANCE PANELBOARD COVERS, CONTACTORS, MOTOR STARTERS, TIME CLOCKS, BATTERY PACKS, CLOCKS, SPEAKERS, ETC THAT ARE IN GOOD CONDITION TO OWNER. CONTACT OWNER FOR VERIFICATION IF ITEMS ARE IN QUESTIONABLE CONDITION.
- 5. COORDINATE ALL DEMOLITION AND CONSTRUCTION ACTIVITIES WITH THE OWNER TO MINIMIZE DISRUPTION OF THE NORMAL DAILY FUNCTIONING OF THE OWNERS OCCUPIED AREAS.
- 6. REMOVE AND REINSTALL ALL EXISTING CEILING MOUNTED DEVICES INDICATED TO REMAIN AS REQUIRED TO SUIT NEW CEILING INSTALLATION.
- 7. ALL REMOVED DEVICE WALL PENETRATIONS SHALL BE PATCHED AND PAINTED TO MATCH EXISTING WALL COLOR OR WALL COLOR PER ARCHITECT'S DIRECTION.



PARTIAL SCHEMATIC NATURAL GAS PIPING RISER DIAGRAM – DEMOLITION



LONGEST RUN = 80'

- 1. THE CONTRACTOR SHALL VERIFY ALL CAPACITIES AND PIPE SIZES.
- 2. PAINT ALL GAS PIPING YELLOW.
- 3. GAS PIPING SIZED PER 2018 IFGC TABLE 402.4(5).

PARTIAL SCHEMATIC NATURAL GAS PIPING RISER DIAGRAM – NEW WORK

LEGEND							
SYMBOLS		SYMBOLS		ABBREVIATIONS		ABBREVIATIONS	
SYMBOL	DEFINITION	SYMBOL	DEFINITION	ABBREV.	DEFINITION	ABBREV.	DEFINITION
---	COLD WATER	□	FLOOR SINK	140'	140' DOMESTIC HOT WATER	HYD	HYDRAULIC
----	TEMPERED WATER (110')	⊙ (P)	ROOF DRAIN (W/ SQ.FT INDICATED)	140'R	140' DOMESTIC HOT WATER RETURN	IN	INCHES
-----	TEMPERED WATER RETURN (110')	⌋	TRAP (ELEVATION)	AAV	AUTOMATIC AIR VENT	I.E.	INVERT ELEVATION
-----	140' DOMESTIC HOT WATER	⌋	VENT THROUGH ROOF (ELEVATION)	ABV	ABOVE	IW	INDIRECT WASTE
-----	140' DOMESTIC HOT WATER RETURN	⌋	VENT THROUGH ROOF (PLAN)	AD	AREA DRAIN	LOC	LIMIT OF CONTRACT
---	TEMPERED WATER	○	MIXING VALVE	AFF	ABOVE FINISHED FLOOR	MAV	MANUAL AIR VENT
---	FIRE LINE	○	METER (FLUID OR GAS)	ANC	ANCHOR	NFGH	NON-FREEZE GROUND HYDRANT
---	SPRINKLER LINE	⌋	INCHES	AP	ACCESS PANEL	NFWH	NON-FREEZE WALL HYDRANT
---	SANITARY	⌋	FEET	APPROX	APPROXIMATE	NRS	NON-RISING STEM & YOKE
---	VENT	⌋	HOSE BIBB (PLAN)	AQ	AQUASTAT	OHD	OPEN HUB DRAIN
---	STORM WATER	⌋	NON-FREEZE WALL HYDRANT	AV	ACID VENT	O,S,&Y	OUTSIDE STEM & YOKE VALVE
---	PUMPED DISCHARGE	⌋	HOSE BIBB (ELEV.)	AW	ACID WASTE	P	PRESSURE
---	CONDENSATE DRAIN	⌋	HOSE END DRAIN	BDV	BLOW DOWN VALVE	PCOND	PUMPED CONDENSATE
---	FOUNDATION DRAIN	⌋	OUTSIDE STEM & YOKE VALVE	BF	BLIND FLANGE	PD	PUMPED DISCHARGE
---	ACID RESISTANT WASTE	⌋	NON-RISING STEM & YOKE	BFP	BACKFLOW PREVENTER	PH	PIPE HANGER
---	ACID RESISTANT VENT	⌋	FLOW SWITCH	BHP	BRAKE HORSEPOWER	PRV	PRESSURE REDUCING VALVE
---	COMPRESSED AIR	⌋	TAMPER SWITCH	BOP	BOTTOM OF PIPE	PS	PRESSURE SWITCH
---	BALL VALVE	⌋	PRESSURE SWITCH	BOTT	BOTTOM	PSAN	PUMPED SANITARY
---	PIPING BELOW GRADE OR SLAB	⌋	FIRE DEPT HOSE CONNECTION	BTU	BRITISH THERMAL UNIT	PSC	PUMPED STEAM CONDENSATE
---	BUTTERFLY VALVE	⌋	FLOOR CONTROL VALVE ASSEMBLY	BTUH	BRITISH THERMAL UNIT PER HOUR	RD	ROOF DRAIN
---	UNION	⌋	'Y' STRAINER	BWV	BACK WATER VALVE W/ ACCESS COVER	RL	RAIN LEADER
---	GATE VALVE	⌋	WATER HAMMER ARRESTOR	CAP	CAPACITY	SAN, S	SANITARY
---	GLOBE VALVE	⌋	ACCESS PANEL	CD, COND	CONDENSATE DRAIN	SC	STEAM CONDENSATE
---	BALANCING VALVE	⌋	POINT OF CONN. TO SITE UTILITIES	CI	CAST IRON	SCH	SCHEDULE
---	PLUG VALVE	⌋	SQUARE FOOTAGE	CLG	CEILING	SP	SPRINKLER LINE
---	REDUCED PRESS. BACKFLOW PREVENTER	⌋	DUPLEX GAS OUTLET	CO	CLEANOUT	STD	STANDARD
---	PRESSURE REDUCING VALVE	⌋	ECCENTRIC REDUCER	CONN	CONNECT	SW	STORM WATER
---	CHECK VALVE	⌋	CONCENTRIC REDUCER	CONC	CONCRETE	T	TEMPERATURE
---	DOUBLE DETECTOR CHECK VALVE	⌋	FLEXIBLE CONNECTION	CU FT	CUBIC FEET	TD	TRENCH DRAIN
---	BACKWATER VALVE	⌋	CAPPED PIPE	CW	COLD WATER	TS	TAMPER SWITCH
---	FLOOR CLEANOUT	⌋	BLIND FLANGE	CX	CONNECT TO EXISTING	TW	TEMPERED WATER
---	WALL CLEANOUT	⌋	MANUAL AIR VENT	DDC	DOUBLE DETECTOR CHECK VALVE	TWR	TEMPERED WATER RETURN
---	PIPE UP	⌋	AUTOMATIC AIR VENT	DFU	DRAINAGE FIXTURE UNITS	UP	PIPE UP
---	PIPE UP & DOWN	⌋	BLOW DOWN VALVE (W/HOSE END)	DIA	DIAMETER	UP&DN	PIPE UP & DN
---	PIPE DOWN	⌋	PRESSURE/TEMP. RELIEF VALVE	DISH	DISCHARGE	V	VENT
---	SIGHT GLASS	⌋	PRESSURE DIFFERENCE	DN	PIPE DOWN	VB	VACUUM BREAKER
---	FLOAT VALVE	⌋	TEMPERATURE DIFFERENCE	DS	DOWN SPOUT W/BOOT	VTR	VENT THROUGH ROOF
---	FLOOR DRAIN	⌋	CENTER LINE	DST	DEEP SEAL TRAP	WCO	WALL CLEANOUT
---	PRESSURE GAUGE W/ NEEDLE VALVE	⌋	THERMOMETER	DWG	DRAWING	WHH	WATER HAMMER ARRESTOR
---	DIAMETER (OR ELECTRICAL PHASE)	⌋		ELEC	ELECTRIC	WSFU	WATER SUPPLY FIXTURE UNITS
---	BACK WATER VALVE W/ ACCESS COVER	⌋		ELEV	ELEVATION	TD	TRENCH DRAIN
---	SOLENOID VALVE	⌋		EWT	ENTERING WATER TEMPERATURE		
---	SLOPE OF PIPE (WITH % OF SLOPE SHOWN)	⌋		EX	EXISTING		
---	DIRECTION OF FLOW	⌋		F	FIRE LINE		
---	FUNNEL CONNECTION @ FLOOR DRAIN	⌋		FC	FUNNEL CONNECTION @ FD		
---	SANITARY/WATER RISER DESIGNATION	⌋		FCO	FLOOR CLEANOUT		
				FCVA	FLOOR CONTROL VALVE ASSEMBLY		
				FD	FLOOR DRAIN		
				FDV	FIRE DEPT. HOSE CONNECTION		
				FS	FLOW SWITCH		
				FT	FEET		
				FT-HD	FEET OF HEAD		
				G	GAS		
				GA	GAUGE		
				GALV	GALVANIZED		
				GPM	GALLONS PER MINUTE		
				HB	HOSE BIBB		
				HED	HOSE END DRAIN		
				HOR	HORIZONTAL		
				HP	HORSEPOWER		
				HT	HEAT TRAP		
				HW	HOT WATER (140°F)		
				HWR	HOT WATER RETURN (140°F)		

NOTE: NOT ALL SYMBOLS MAY BE USED.

NOTE: NOT ALL ABBREVIATIONS MAY BE USED.

NO.	DATE	REVISIONS	DESCRIPTION

THIS DRAWING AND THE DESIGN THEREOF ARE THE PROPERTY OF ALBAN ENGINEERING, INC. AND SHALL NOT BE ALTERED OR REUSED IN WHOLE OR IN PART WITHOUT THE WRITTEN PERMISSION OF ALBAN ENGINEERING, INC. Copyright © 2023

PROFESSIONAL CERTIFICATION: I AM A PROFESSIONAL ENGINEER IN THE STATE OF MARYLAND. MY LICENSE NO. IS 151896. EXPIRATION DATE: 12-13-2023

ALBAN ENGINEERING, INC.
303 INTERNATIONAL CIRCLE
HUNT VALLEY, MD 21080
www.albanengineering.com
410.842.6411

MECH/PLUMB LEGEND, CONVENTIONS, RISER, AND ABBREVIATIONS
ROSA PARKS MS - EMERGENCY UPGRADE
OLNEY, MD 20832

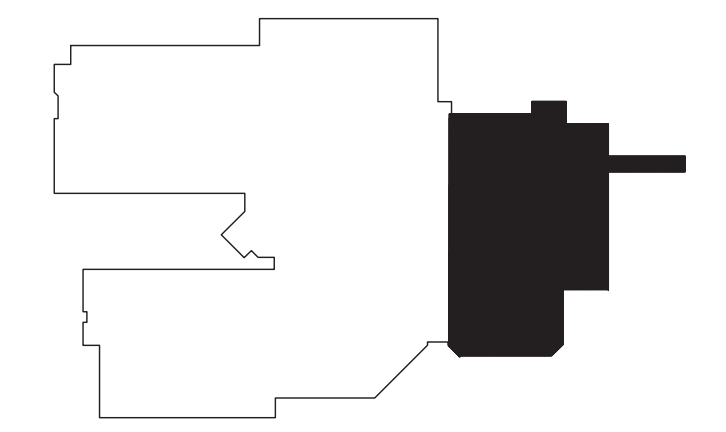
PN# 22080
PROJECT MANAGER DRH
DESIGNER GAD

MP001
BID SET
06-09-2023

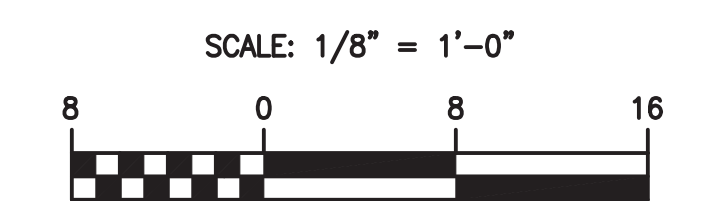
MATCHLINE -- AREA B



PARTIAL FLOOR PLAN -- AREA A
SCALE: 1/8" = 1'-0"



KEY PLAN



- GENERAL NOTES:**
- PATCH ALL HOLES, PENETRATIONS, ETC. TO MATCH EXISTING MATERIALS (WALLS, FLOORS, ROOF, ETC), FINISHES ETC. AND PAINT TO MATCH EXISTING FINISHES. ALL ROOFING WORK SHALL BE PERFORMED BY A CERTIFIED ROOFING CONTRACTOR TO MAINTAIN THE EXISTING WARRANTY IN THE AREAS OF WORK.
 - REMOVE EXISTING ACOUSTIC CEILING TILES AS REQUIRED FOR DEMOLITION. REPLACE ALL DEMOLISHED CEILING COMPONENTS IN KIND TO MATCH EXISTING CONDITIONS.
- DRAWING NOTES:**
- REMOVE EXISTING PIPING.

NO.	DATE	REVISIONS	DESCRIPTION

THIS DRAWING AND THE DESIGN INFORMATION CONTAINED HEREIN ARE THE PROPERTY OF ALBAN ENGINEERING, INC. AND SHALL NOT BE ALTERED OR REUSED IN WHOLE OR IN PART WITHOUT THE WRITTEN PERMISSION OF ALBAN ENGINEERING, INC.
Copyright © 2023

PROFESSIONAL CERTIFICATION: I, [Name], a duly licensed professional engineer under the laws of the State of Maryland, License No. 51896, Expiration Date: 12-13-2023.

ALBAN ENGINEERING, INC.
303 INTERNATIONAL CIRCLE
HUNT VALLEY, MD 21080
www.albanengineering.com
410.842.6411

**PARTIAL FLOOR PLAN -- AREA A
-- DEMOLITION**
ROSA PARKS MS -- EMERGENCY UPGRADE
OLNEY, MD 20832

PN#	22080
PROJECT MANAGER	DRH
DESIGNER	BSF

MPD101
BID SET
06-09-2023

GENERAL NOTES:

1. PATCH ALL HOLES, PENETRATIONS, ETC. TO MATCH EXISTING MATERIALS (WALLS, FLOORS, ROOF, ETC), FINISHES ETC. AND PAINT TO MATCH EXISTING FINISHES.
2. REMOVE EXISTING ACOUSTIC TILE CEILING AS REQUIRED FOR DEMOLITION. REPLACE ALL DEMOLISHED CEILING COMPONENTS IN KIND TO MATCH EXISTING CONDITIONS.
3. COORDINATE GAS LINE WITH EXISTING UTILITIES.

DRAWING NOTES:

- 1 RUN NEW GAS PIPING ALONG EXISTING PATH TO GENERATOR FROM BUILDING.

NO.	DATE	REVISIONS	DESCRIPTION

THIS DRAWING AND THE DESIGN INFORMATION CONTAINED HEREIN ARE THE PROPERTY OF ALBAN ENGINEERING, INC. AND SHALL NOT BE ALTERED OR REUSED IN WHOLE OR IN PART WITHOUT THE WRITTEN PERMISSION OF ALBAN ENGINEERING, INC.
Copyright © 2023

PROFESSIONAL CERTIFICATION: I AM A PROFESSIONAL ENGINEER IN THE STATE OF MARYLAND. MY DOCUMENTS WERE PREPARED OR APPROVED BY ME, AND THAT I AM A DULY LICENSED PROFESSIONAL ENGINEER UNDER THE LAWS OF MARYLAND.
LICENSE NO. 51896
EXPIRATION DATE: 12-13-2023

ALBAN ENGINEERING, INC.
303 INTERNATIONAL CIRCLE
HUNT VALLEY, MD 21080
www.albanengineering.com
410.842.6411

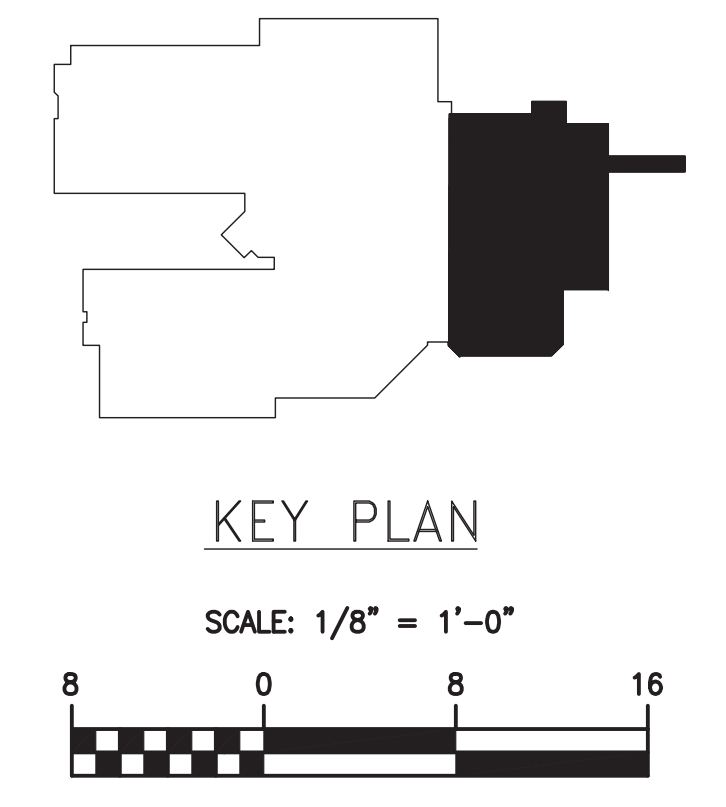
PARTIAL FLOOR PLAN - AREA A
ROSA PARKS MS - EMERGENCY UPGRADE
OLNEY, MD 20832

PN#	22080
PROJECT MANAGER	DRH
DESIGNER	GAD

MP101
BID SET
06-09-2023



PARTIAL FLOOR PLAN - AREA A
SCALE: 1/8" = 1'-0"



THIS DRAWING AND THE DESIGN INFORMATION CONTAINED HEREIN ARE THE PROPERTY OF ALBAN ENGINEERING, INC. AND SHALL NOT BE ALTERED OR REUSED IN WHOLE OR IN PART WITHOUT THE WRITTEN PERMISSION OF ALBAN ENGINEERING, INC.
Copyright © 2023

MATCHLINE - AREA C

MATCHLINE - AREA B